

Phospho-Glycogen synthase (Ser641) Rabbit mAb

Catalog # AP75505

Product Information

Application	WB, IHC-P, IP
Primary Accession	P13807
Reactivity	Human, Mouse, Rat
Host	Rabbit
Clonality	Monoclonal Antibody
Calculated MW	83786

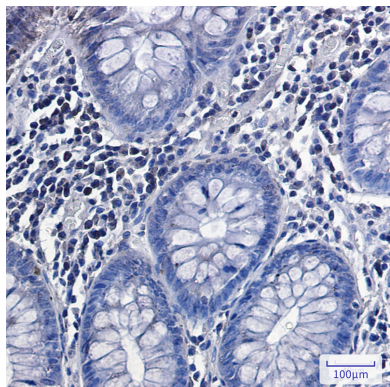
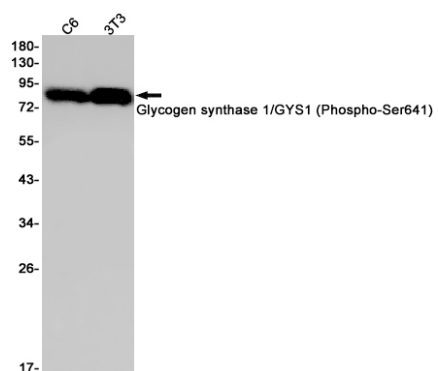
Additional Information

Gene ID	2997
Other Names	GYS1
Dilution	WB~~1/500-1/1000 IHC-P~~N/A IP~~N/A
Format	50mM Tris-Glycine(pH 7.4), 0.15M NaCl, 40%Glycerol, 0.01% sodium azide and 0.05% BSA.
Storage	Store at 4°C short term. Aliquot and store at -20°C long term. Avoid freeze/thaw cycles.

Protein Information

Name	GYS1 (HGNC:4706)
Synonyms	GYS
Function	Glycogen synthase participates in the glycogen biosynthetic process along with glycogenin and glycogen branching enzyme. Extends the primer composed of a few glucose units formed by glycogenin by adding new glucose units to it. In this context, glycogen synthase transfers the glycosyl residue from UDP-Glc to the non-reducing end of alpha-1,4-glucan.
Tissue Location	Expressed in skeletal muscle and most other cell types where glycogen is present.

Images



Please note: All products are 'FOR RESEARCH USE ONLY. NOT FOR USE IN DIAGNOSTIC OR THERAPEUTIC PROCEDURES'.