

# Glycogen Synthase 1 Rabbit mAb

Catalog # AP75504

## Product Information

---

<b>Application</b>	WB, IP, ICC
<b>Primary Accession</b>	<a href="#">P13807</a>
<b>Reactivity</b>	Human, Rat
<b>Host</b>	Rabbit
<b>Clonality</b>	Monoclonal Antibody
<b>Calculated MW</b>	83786

## Additional Information

---

<b>Gene ID</b>	2997
<b>Other Names</b>	GYS1
<b>Dilution</b>	WB~~1/500-1/1000 IP~~1/20 ICC~~N/A
<b>Format</b>	50mM Tris-Glycine(pH 7.4), 0.15M NaCl, 40%Glycerol, 0.01% sodium azide and 0.05% BSA.
<b>Storage</b>	Store at 4°C short term. Aliquot and store at -20°C long term. Avoid freeze/thaw cycles.

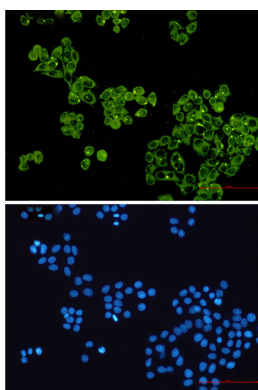
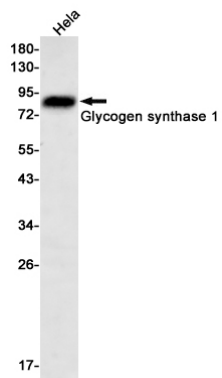
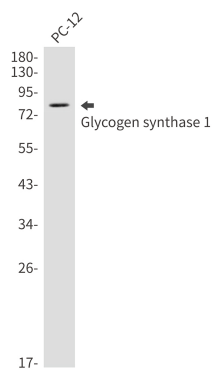
## Protein Information

---

<b>Name</b>	GYS1 ( <a href="#">HGNC:4706</a> )
<b>Synonyms</b>	GYS
<b>Function</b>	Glycogen synthase participates in the glycogen biosynthetic process along with glycogenin and glycogen branching enzyme. Extends the primer composed of a few glucose units formed by glycogenin by adding new glucose units to it. In this context, glycogen synthase transfers the glycosyl residue from UDP-Glc to the non-reducing end of alpha-1,4-glucan.
<b>Tissue Location</b>	Expressed in skeletal muscle and most other cell types where glycogen is present.

## Images

---



Please note: All products are 'FOR RESEARCH USE ONLY. NOT FOR USE IN DIAGNOSTIC OR THERAPEUTIC PROCEDURES'.