

# Fibrillarin Rabbit mAb

Catalog # AP75438

## Product Information

---

Application	WB, IP
Primary Accession	<a href="#">P22087</a>
Reactivity	Human, Mouse, Rat
Host	Rabbit
Clonality	Monoclonal Antibody
Calculated MW	33784

## Additional Information

---

Gene ID	2091
Other Names	FBL
Dilution	WB~~1/500-1/1000 IP~~N/A
Format	50mM Tris-Glycine(pH 7.4), 0.15M NaCl, 40%Glycerol, 0.01% sodium azide and 0.05% BSA.
Storage	Store at 4°C short term. Aliquot and store at -20°C long term. Avoid freeze/thaw cycles.

## Protein Information

---

Name	FBL ( <a href="#">HGNC:3599</a> )
Synonyms	FIB1, FLRN
Function	<p>S-adenosyl-L-methionine-dependent methyltransferase that has the ability to methylate both RNAs and proteins (PubMed:<a href="#">24352239</a>, PubMed:<a href="#">30540930</a>, PubMed:<a href="#">32017898</a>). Involved in pre-rRNA processing by catalyzing the site-specific 2'-hydroxyl methylation of ribose moieties in pre-ribosomal RNA (PubMed:<a href="#">30540930</a>). Site specificity is provided by a guide RNA that base pairs with the substrate (By similarity). Methylation occurs at a characteristic distance from the sequence involved in base pairing with the guide RNA (By similarity). Probably catalyzes 2'-O-methylation of U6 snRNAs in box C/D RNP complexes (PubMed:<a href="#">32017898</a>). U6 snRNA 2'-O-methylation is required for mRNA splicing fidelity (PubMed:<a href="#">32017898</a>). Also acts as a protein methyltransferase by mediating methylation of 'Gln-105' of histone H2A (H2AQ104me), a modification that impairs binding of the FACT complex and is specifically present at 35S ribosomal DNA locus (PubMed:<a href="#">24352239</a>, PubMed:<a href="#">30540930</a>). Part of the small subunit (SSU) processome, first precursor of the small eukaryotic ribosomal subunit. During the assembly of the SSU processome in the nucleolus, many ribosome biogenesis factors, an</p>

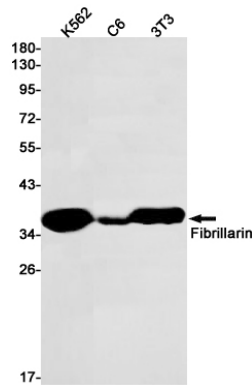
RNA chaperone and ribosomal proteins associate with the nascent pre-rRNA and work in concert to generate RNA folding, modifications, rearrangements and cleavage as well as targeted degradation of pre-ribosomal RNA by the RNA exosome (PubMed:[34516797](#)).

## Cellular Location

Nucleus, nucleolus. Nucleus, nucleoplasm {ECO:0000250|UniProtKB:P35550}.  
Note=Fibrillar region of the nucleolus

## Images

---



Please note: All products are 'FOR RESEARCH USE ONLY. NOT FOR USE IN DIAGNOSTIC OR THERAPEUTIC PROCEDURES'.