

Extracellular Matrix Protein 1 Rabbit mAb

Catalog # AP75417

Product Information

Application	WB, IHC-P, IHC-F, IP, ICC
Primary Accession	Q16610
Reactivity	Human
Host	Rabbit
Clonality	Monoclonal Antibody
Calculated MW	60674

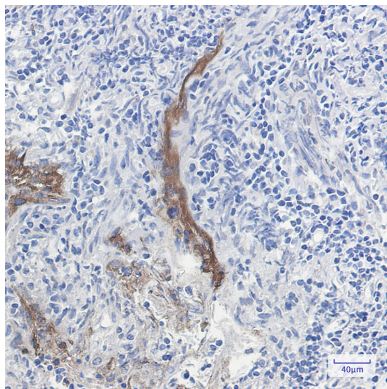
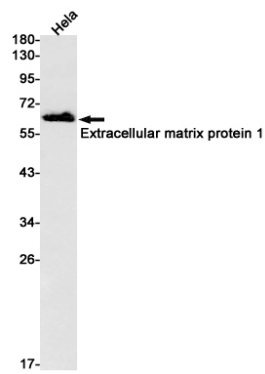
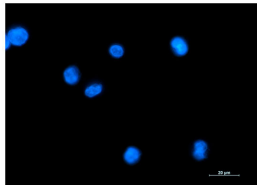
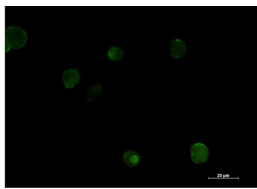
Additional Information

Gene ID	1893
Other Names	ECM1
Dilution	WB~~1/500-1/1000 IHC-P~~N/A IHC-F~~N/A IP~~N/A ICC~~N/A
Format	50mM Tris-Glycine(pH 7.4), 0.15M NaCl, 40%Glycerol, 0.01% sodium azide and 0.05% BSA.
Storage	Store at 4°C short term. Aliquot and store at -20°C long term. Avoid freeze/thaw cycles.

Protein Information

Name	ECM1
Function	Involved in endochondral bone formation as negative regulator of bone mineralization. Stimulates the proliferation of endothelial cells and promotes angiogenesis. Inhibits MMP9 proteolytic activity.
Cellular Location	Secreted, extracellular space, extracellular matrix
Tissue Location	Expressed in breast cancer tissues. Little or no expression observed in normal breast tissues. Expressed in skin; wide expression is observed throughout the dermis with minimal expression in the epidermis.

Images



Please note: All products are 'FOR RESEARCH USE ONLY. NOT FOR USE IN DIAGNOSTIC OR THERAPEUTIC PROCEDURES'.