

# EpCAM Rabbit mAb

Catalog # AP75405

## Product Information

---

|                          |                           |
|--------------------------|---------------------------|
| <b>Application</b>       | WB, IHC-P, IHC-F, IP, ICC |
| <b>Primary Accession</b> | <a href="#">P16422</a>    |
| <b>Reactivity</b>        | Human, Mouse, Rat         |
| <b>Host</b>              | Rabbit                    |
| <b>Clonality</b>         | Monoclonal Antibody       |
| <b>Calculated MW</b>     | 34932                     |

## Additional Information

---

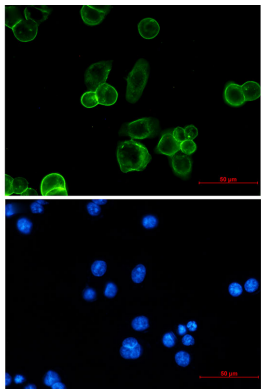
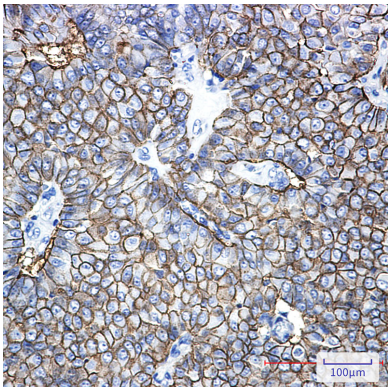
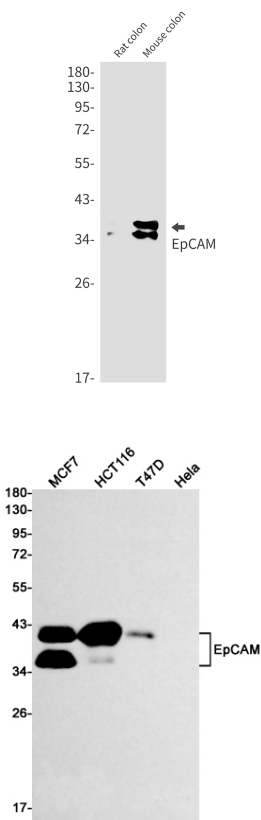
|                    |  |
|--------------------|--|
| <b>Gene ID</b>     | 4072   |
| <b>Other Names</b> | EPCAM  |
| <b>Dilution</b>    | WB~~1/500-1/1000 IHC-P~~N/A IHC-F~~N/A IP~~1/20 ICC~~N/A                                 |
| <b>Format</b>      | 50mM Tris-Glycine(pH 7.4), 0.15M NaCl, 40%Glycerol, 0.01% sodium azide and 0.05% BSA.    |
| <b>Storage</b>     | Store at 4°C short term. Aliquot and store at -20°C long term. Avoid freeze/thaw cycles. |

## Protein Information

---

|                          |  |
|--------------------------|--|
| <b>Name</b>              | EPCAM  |
| <b>Synonyms</b>          | GA733-2, M1S2, M4S1, MIC18, TACSTD1, TRO   |
| <b>Function</b>          | May act as a physical homophilic interaction molecule between intestinal epithelial cells (IECs) and intraepithelial lymphocytes (IELs) at the mucosal epithelium for providing immunological barrier as a first line of defense against mucosal infection. Plays a role in embryonic stem cells proliferation and differentiation. Up-regulates the expression of FABP5, MYC and cyclins A and E. |
| <b>Cellular Location</b> | Lateral cell membrane; Single-pass type I membrane protein. Cell junction, tight junction. Note=Colocalizes with CLDN7 at the lateral cell membrane and tight junction   |
| <b>Tissue Location</b>   | Highly and selectively expressed by undifferentiated rather than differentiated embryonic stem cells (ESC) Levels rapidly diminish as soon as ESC's differentiate (at protein levels). Expressed in almost all epithelial cell membranes but not on mesodermal or neural cell membranes. Found on the surface of adenocarcinoma.   |

Images



Please note: All products are 'FOR RESEARCH USE ONLY. NOT FOR USE IN DIAGNOSTIC OR THERAPEUTIC PROCEDURES'.