

# ENO3 Rabbit mAb

Catalog # AP75400

## Product Information

---

<b>Application</b>	WB, ICC
<b>Primary Accession</b>	<a href="#">P13929</a>
<b>Reactivity</b>	Human, Mouse, Rat
<b>Host</b>	Rabbit
<b>Clonality</b>	Monoclonal Antibody
<b>Calculated MW</b>	46987

## Additional Information

---

<b>Gene ID</b>	2027
<b>Other Names</b>	ENO3
<b>Dilution</b>	WB~~1/500-1/1000 ICC~~N/A
<b>Format</b>	50mM Tris-Glycine(pH 7.4), 0.15M NaCl, 40%Glycerol, 0.01% sodium azide and 0.05% BSA.

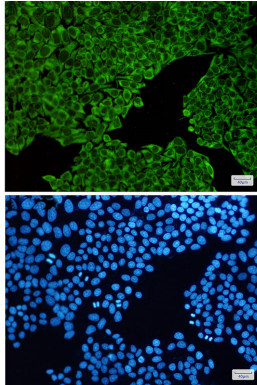
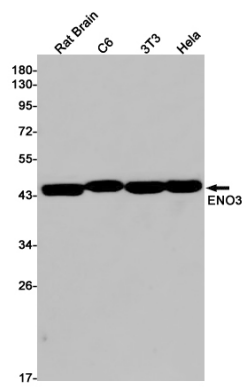
## Protein Information

---

<b>Name</b>	ENO3
<b>Function</b>	Glycolytic enzyme that catalyzes the conversion of 2- phosphoglycerate to phosphoenolpyruvate. Appears to have a function in striated muscle development and regeneration.
<b>Cellular Location</b>	Cytoplasm. Note=Localized to the Z line. Some colocalization with CKM at M-band (By similarity).
<b>Tissue Location</b>	The alpha/alpha homodimer is expressed in embryo and in most adult tissues. The alpha/beta heterodimer and the beta/beta homodimer are found in striated muscle, and the alpha/gamma heterodimer and the gamma/gamma homodimer in neurons

## Images

---



Please note: All products are 'FOR RESEARCH USE ONLY. NOT FOR USE IN DIAGNOSTIC OR THERAPEUTIC PROCEDURES'.