

DOCK8 Rabbit mAb

Catalog # AP75370

Product Information

Application	WB, ICC
Primary Accession	Q8NF50
Reactivity	Human
Host	Rabbit
Clonality	Monoclonal Antibody
Calculated MW	238529

Additional Information

Gene ID	81704
Other Names	DOCK8
Dilution	WB~~1/500-1/1000 ICC~~N/A
Format	50mM Tris-Glycine(pH 7.4), 0.15M NaCl, 40%Glycerol, 0.01% sodium azide and 0.05% BSA.
Storage	Store at 4°C short term. Aliquot and store at -20°C long term. Avoid freeze/thaw cycles.

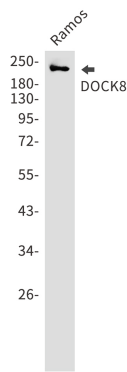
Protein Information

Name	DOCK8
Function	Guanine nucleotide exchange factor (GEF) which specifically activates small GTPase CDC42 by exchanging bound GDP for free GTP (PubMed: 22461490 , PubMed: 28028151). During immune responses, required for interstitial dendritic cell (DC) migration by locally activating CDC42 at the leading edge membrane of DC (By similarity). Required for CD4(+) T-cell migration in response to chemokine stimulation by promoting CDC42 activation at T cell leading edge membrane (PubMed: 28028151). Is involved in NK cell cytotoxicity by controlling polarization of microtubule-organizing center (MTOC), and possibly regulating CCDC88B-mediated lytic granule transport to MTOC during cell killing (PubMed: 25762780).
Cellular Location	Cytoplasm. Cell membrane; Peripheral membrane protein; Cytoplasmic side. Cell projection, lamellipodium membrane; Peripheral membrane protein; Cytoplasmic side. Note=Enriched and co-localizes with GTPase CDC42 at the immunological synapse formed during T cell/antigen presenting cell cognate interaction. Translocates from the cytoplasm to the plasma membrane in response to chemokine CXCL12/SDF-1-alpha stimulation

Tissue Location

Expressed in peripheral blood mononuclear cells (PBMCs).

Images



Please note: All products are 'FOR RESEARCH USE ONLY. NOT FOR USE IN DIAGNOSTIC OR THERAPEUTIC PROCEDURES'.