

# Cytokeratin 18 Rabbit mAb

Catalog # AP75328

## Product Information

---

Application	WB, IHC-P, IHC-F, ICC
Primary Accession	<a href="#">P05783</a>
Reactivity	Human
Host	Rabbit
Clonality	Monoclonal Antibody
Calculated MW	48058

## Additional Information

---

Gene ID	3875
Other Names	KRT18
Dilution	WB~~1/500-1/1000 IHC-P~~N/A IHC-F~~N/A ICC~~N/A
Format	1xPBS(pH 7.4), 150mM NaCl, 50% Glycerol, 0.02% Sodium azide and 0.05% BSA
Storage	Store at 4°C short term. Aliquot and store at -20°C long term. Avoid freeze/thaw cycles.

## Protein Information

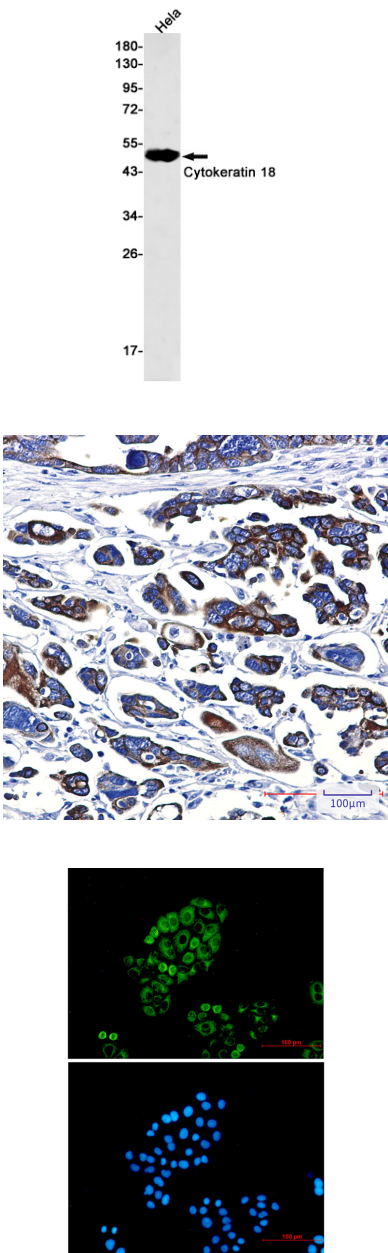
---

Name	KRT18 ( <a href="#">HGNC:6430</a> )
Synonyms	CYK18
Function	Required for the formation of KRT8/KRT18 filaments that are involved in ARHGEF40-mediated actin stress fiber formation and tensional force-induced stress fiber formation and reinforcement (PubMed: <a href="#">26823019</a> ). Also acts downstream of ROCK kinase activation as part of a positive feedback mechanism in response to cellular mechanical stress loading (PubMed: <a href="#">26823019</a> ). Organization and orientation of KRT18 filaments are responsible for the properly elongated morphology of epithelial tubules (By similarity). Involved in the uptake of thrombin-antithrombin complexes by hepatic cells (By similarity). When phosphorylated, plays a role in filament reorganization. Involved in the delivery of mutated CFTR to the plasma membrane. Together with KRT8, is involved in interleukin-6 (IL-6)- mediated barrier protection.
Cellular Location	Nucleus matrix {ECO:0000250 UniProtKB:Q5BJY9}. Cytoplasm, perinuclear region. Nucleus, nucleolus. Cytoplasm {ECO:0000250 UniProtKB:Q5BJY9}

**Tissue Location**

Expressed in colon, placenta, liver and very weakly in exocervix. Increased expression observed in lymph nodes of breast carcinoma.

**Images**



Please note: All products are 'FOR RESEARCH USE ONLY. NOT FOR USE IN DIAGNOSTIC OR THERAPEUTIC PROCEDURES'.