

Cyclin A2 Rabbit mAb

Catalog # AP75311

Product Information

Application	WB, IHC-P, IHC-F, IP
Primary Accession	P20248
Reactivity	Human, Mouse
Host	Rabbit
Clonality	Monoclonal Antibody
Isotype	IgG
Conjugate	Unconjugated
Purification	Affinity Purified
Calculated MW	48551

Additional Information

Gene ID	890
Other Names	CCNA2
Dilution	WB~~1:1000-1:5000 IHC-P~~N/A IHC-F~~N/A IP~~1:20-1:50
Format	Liquid in 50mM Tris-Glycine(pH 7.4), 0.15M NaCl, 40%Glycerol, 0.01% sodium azide and 0.05% BSA.
Storage	Store at 4°C short term. Aliquot and store at -20°C long term. Avoid freeze/thaw cycles.

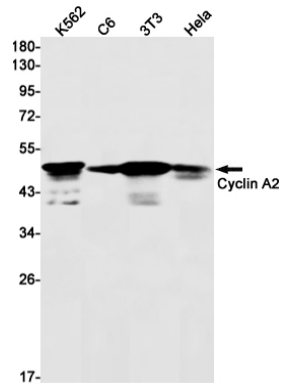
Protein Information

Name	CCNA2 (HGNC:1578)
Function	Cyclin which controls both the G1/S and the G2/M transition phases of the cell cycle. Functions through the formation of specific serine/threonine protein kinase holoenzyme complexes with the cyclin- dependent protein kinases CDK1 or CDK2. The cyclin subunit confers the substrate specificity of these complexes and differentially interacts with and activates CDK1 and CDK2 throughout the cell cycle.
Cellular Location	Nucleus. Cytoplasm. Note=Exclusively nuclear during interphase (PubMed:1312467). Detected in the nucleus and the cytoplasm at prophase (PubMed:1312467). Cytoplasmic when associated with SCAPER (PubMed:17698606).

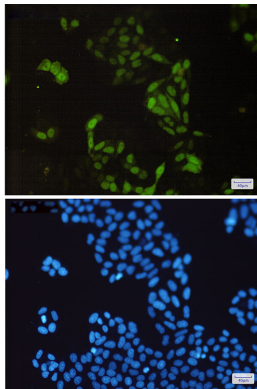
Background

The protein encoded by this gene belongs to the highly conserved cyclin family, whose members are characterized by a dramatic periodicity in protein abundance through the cell cycle. Cyclins function as regulators of CDK kinases. Different cyclins exhibit distinct expression and degradation patterns which contribute to the temporal coordination of each mitotic event. In contrast to cyclin A1, which is present only in germ cells, this cyclin is expressed in all tissues. This cyclin binds and activates CDC2 or CDK2 kinases, and thus promotes both cell cycle G1/S and G2/M transitions.

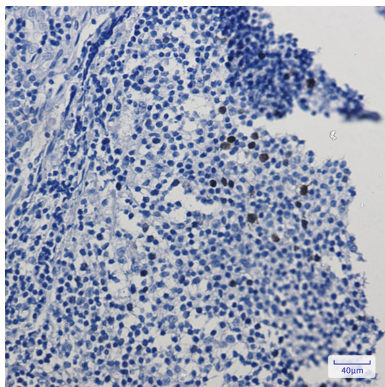
Images



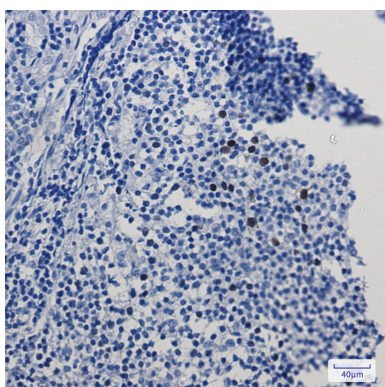
Western blot analysis of Cyclin A2 in K562, C6, 3T3, HeLa lysates using Cyclin A2 antibody.



Immunocytochemistry analysis of Cyclin A2(green) in HeLa using Cyclin A2 antibody, and DAPI(blue)



Immunohistochemistry analysis of paraffin-embedded Human tonsil using Cyclin A2 antibody. High-pressure and temperature Sodium Citrate pH 6.0 was used for antigen retrieval.



Please note: All products are 'FOR RESEARCH USE ONLY. NOT FOR USE IN DIAGNOSTIC OR THERAPEUTIC PROCEDURES'.