

CLPTM1 Rabbit mAb

Catalog # AP75273

Product Information

Application	WB, FC, IP
Primary Accession	O96005
Reactivity	Rat, Human, Mouse
Host	Rabbit
Clonality	Monoclonal Antibody
Isotype	IgG
Conjugate	Unconjugated
Purification	Affinity Purified
Calculated MW	76097

Additional Information

Gene ID	1209
Other Names	CLPTM1
Dilution	WB~~1:500-1:1000 FC~~1:10~50 IP~~1:20
Format	Liquid in 50mM Tris-Glycine(pH 7.4), 0.15M NaCl, 40%Glycerol, 0.01% sodium azide and 0.05% BSA.
Storage	Store at 4°C short term. Aliquot and store at -20°C long term. Avoid freeze/thaw cycles.

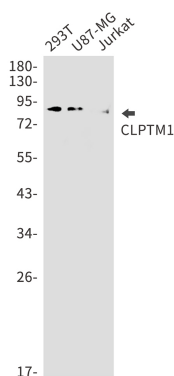
Protein Information

Name	CLPTM1
Function	Involved in GABAergic but not glutamatergic transmission. Binds and traps GABAA receptors in the endoplasmic reticulum (ER). Modulates postsynaptic GABAergic transmission, and therefore inhibitory neurotransmission, by reducing the plasma membrane expression of these receptors. Altered GABAergic signaling is one among many causes of cleft palate (By similarity). Might function as a lipid scramblase, translocating lipids in membranes from one leaflet to the other one (By similarity). Required for efficient glycosylphosphatidylinositol (GPI) inositol deacylation in the ER, which is a crucial step to switch GPI- anchored proteins (GPI-APs) from protein folding to transport states (PubMed: 29255114). May play a role in T-cell development (By similarity).
Cellular Location	Membrane; Multi-pass membrane protein
Tissue Location	Widely expressed..

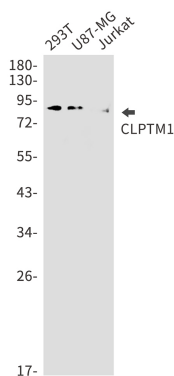
Background

Involved in GABAergic but not glutamatergic transmission. Binds and traps GABAA receptors in the endoplasmic reticulum (ER). Modulates postsynaptic GABAergic transmission, and therefore inhibitory neurotransmission, by reducing the plasma membrane expression of these receptors. Altered GABAergic signaling is one among many causes of cleft palate. Might function as a lipid scramblase, translocating lipids in membranes from one leaflet to the other one.

Images



Western blot analysis of CLPTM1 in 293T, U87-MG, Jurkat lysates using CLPTM1 antibody.



Please note: All products are 'FOR RESEARCH USE ONLY. NOT FOR USE IN DIAGNOSTIC OR THERAPEUTIC PROCEDURES'.