

Claudin 3 Rabbit mAb

Catalog # AP75269

Product Information

Application	WB, IHC-P, FC, IP
Primary Accession	O15551
Reactivity	Human
Host	Rabbit
Clonality	Monoclonal Antibody
Isotype	IgG
Conjugate	Unconjugated
Purification	Affinity Purified
Calculated MW	23319

Additional Information

Gene ID	1365
Other Names	CLDN3
Dilution	WB~~1:500-1:1000 IHC-P~~N/A FC~~1:20-1:50 IP~~1:20-1:50
Format	Liquid in 50mM Tris-Glycine(pH 7.4), 0.15M NaCl, 40%Glycerol, 0.01% sodium azide and 0.05% BSA.
Storage	Store at 4°C short term. Aliquot and store at -20°C long term. Avoid freeze/thaw cycles.

Protein Information

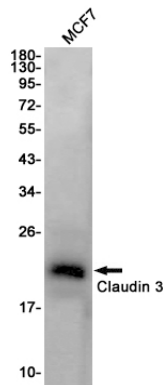
Name	CLDN3
Synonyms	C7orf1, CPETR2
Function	Barrier-forming claudin. Plays a major role in tight junction-specific obliteration of the intercellular space, through calcium-independent cell-adhesion activity.
Cellular Location	Cell junction, tight junction. Cell membrane; Multi-pass membrane protein

Background

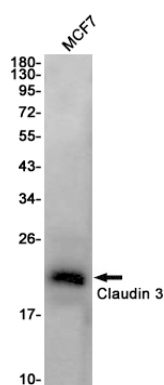
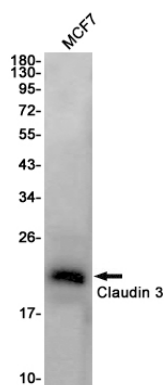
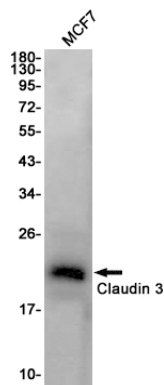
Tight junctions represent one mode of cell-to-cell adhesion in epithelial or endothelial cell sheets, forming continuous seals around cells and serving as a physical barrier to prevent solutes and water from passing freely through the paracellular space. These junctions are comprised of sets of continuous networking

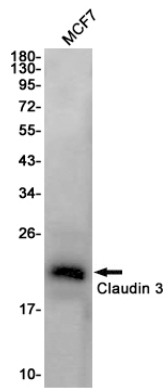
strands in the outwardly facing cytoplasmic leaflet, with complementary grooves in the inwardly facing extracytoplasmic leaflet. The protein encoded by this intronless gene, a member of the claudin family, is an integral membrane protein and a component of tight junction strands. It is also a low-affinity receptor for *Clostridium perfringens* enterotoxin, and shares aa sequence similarity with a putative apoptosis-related protein found in rat.

Images



Western blot analysis of Claudin 3 in MCF-7 lysates using Claudin 3 antibody.





Please note: All products are 'FOR RESEARCH USE ONLY. NOT FOR USE IN DIAGNOSTIC OR THERAPEUTIC PROCEDURES'.