

# Choline Acetyltransferase Rabbit mAb

Catalog # AP75261

## Product Information

---

<b>Application</b>	WB, IHC-P, FC, IP
<b>Primary Accession</b>	<a href="#">P28329</a>
<b>Reactivity</b>	Rat, Human, Mouse
<b>Host</b>	Rabbit
<b>Clonality</b>	Monoclonal Antibody
<b>Isotype</b>	IgG
<b>Conjugate</b>	Unconjugated
<b>Purification</b>	Affinity Purified
<b>Calculated MW</b>	82536

## Additional Information

---

<b>Gene ID</b>	1103
<b>Other Names</b>	CHAT
<b>Dilution</b>	WB~~1:1000-1:5000 IHC-P~~N/A FC~~1:50-1:100 IP~~1:20-1:100
<b>Format</b>	Liquid in 50mM Tris-Glycine(pH 7.4), 0.15M NaCl, 40%Glycerol, 0.01% sodium azide and 0.05% BSA.
<b>Storage</b>	Store at 4°C short term. Aliquot and store at -20°C long term. Avoid freeze/thaw cycles.

## Protein Information

---

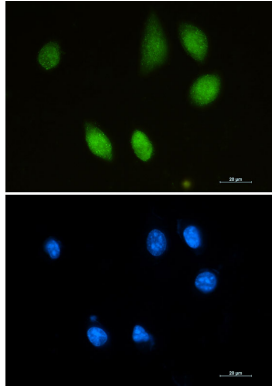
<b>Name</b>	CHAT
<b>Function</b>	Catalyzes the reversible synthesis of acetylcholine (ACh) from acetyl CoA and choline at cholinergic synapses.

## Background

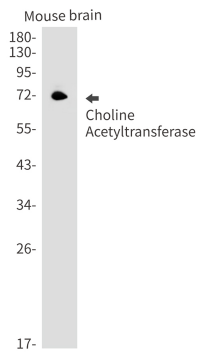
---

CHAT (choline acetyltransferase) belongs to the carnitine/choline acetyltransferase family. It catalyzes the reversible synthesis of acetylcholine (ACh) from acetyl CoA and choline at cholinergic synapses. Defects in CHAT are the cause of congenital myasthenic syndrome with episodic apnea (CMSEA). CHAT is known to be present exclusively in the cytoplasm of cholinergic neurons and anti-CHAT antibody has been considered as the best marker for cholinergic neurons. It has been observed that CHAT gene generates multiple mRNA splice variants, including peripheral type CHAT (pCHAT) and common type CHAT (cCHAT), encoding 40-55 kDa and 66-70 kDa forms of proteins, respectively. This antibody can recognize both pCHAT and cCHAT.

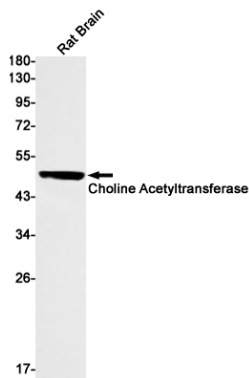
# Images



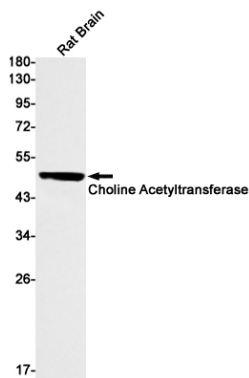
Immunocytochemistry analysis of Choline Acetyltransferase (green) in SH-SY5Y using Choline Acetyltransferase antibody, and DAPI (blue).

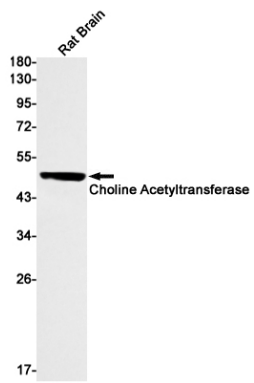


Western blot analysis of Choline Acetyltransferase in mouse brain lysates using Choline Acetyltransferase antibody.



Western blot analysis of Choline Acetyltransferase in rat Brain lysates using Choline Acetyltransferase antibody





Please note: All products are 'FOR RESEARCH USE ONLY. NOT FOR USE IN DIAGNOSTIC OR THERAPEUTIC PROCEDURES'.