

CDC7 Rabbit mAb

Catalog # AP75241

Product Information

Application	WB, IHC-P, IP
Primary Accession	O00311
Reactivity	Rat, Human, Mouse
Host	Rabbit
Clonality	Monoclonal Antibody
Isotype	IgG
Conjugate	Unconjugated
Purification	Affinity Purified
Calculated MW	63888

Additional Information

Gene ID	8317
Other Names	CDC7
Dilution	WB~~1:500-1:1000 IHC-P~~N/A IP~~1:20-1:50
Format	Liquid in 50mM Tris-Glycine(pH 7.4), 0.15M NaCl, 40%Glycerol, 0.01% sodium azide and 0.05% BSA.
Storage	Store at 4°C short term. Aliquot and store at -20°C long term. Avoid freeze/thaw cycles.

Protein Information

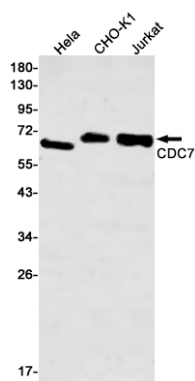
Name	CDC7 (HGNC:1745)
Synonyms	CDC7L1
Function	Kinase involved in initiation of DNA replication. Phosphorylates critical substrates that regulate the G1/S phase transition and initiation of DNA replication, such as MCM proteins and CLASPIN.
Cellular Location	Nucleus.

Background

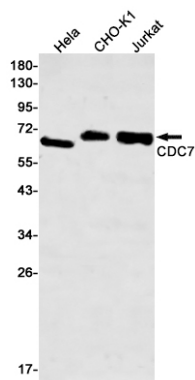
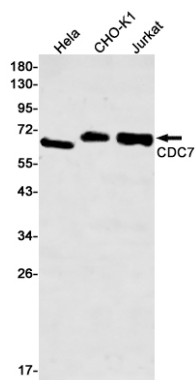
DNA replication in eukaryotic cells is dependent on the phosphorylation of the pre-replicative complex (preRC) at the origin of replication. Two complexes of proteins mediate this event, the cyclin dependent kinase (CDK) complex, and the Cdc7 kinase-ASK complex. Human Cdc7 kinase consists of 574 amino acids

with a molecular weight of 55 kDa. The activity of Cdc7 kinase oscillates during cell cycle. The major targets of Cdc7 kinase are proteins that belong to the MCM complex (mini chromosome maintenance proteins).

Images



Western blot analysis of CDC7 in HeLa, CHO-K1, Jurkat lysates using CDC7 antibody.



Please note: All products are 'FOR RESEARCH USE ONLY. NOT FOR USE IN DIAGNOSTIC OR THERAPEUTIC PROCEDURES'.