

BAT3 Rabbit mAb

Catalog # AP75146

Product Information

Application	WB, IHC-P, FC
Primary Accession	P46379
Reactivity	Rat, Human, Mouse
Host	Rabbit
Clonality	Monoclonal Antibody
Isotype	IgG
Conjugate	Unconjugated
Purification	Affinity Purified
Calculated MW	119409

Additional Information

Gene ID	7917
Other Names	BAG6
Dilution	WB~~1:1000-1:5000 IHC-P~~N/A FC~~1:20-1:50
Format	Liquid in 50mM Tris-Glycine(pH 7.4), 0.15M NaCl, 40%Glycerol, 0.01% sodium azide and 0.05% BSA.
Storage	Store at 4°C short term. Aliquot and store at -20°C long term. Avoid freeze/thaw cycles.

Protein Information

Name	BAG6 (HGNC:13919)
Function	ATP-independent molecular chaperone preventing the aggregation of misfolded and hydrophobic patches-containing proteins (PubMed: 21636303). Functions as part of a cytosolic protein quality control complex, the BAG6/BAT3 complex, which maintains these client proteins in a soluble state and participates in their proper delivery to the endoplasmic reticulum or alternatively can promote their sorting to the proteasome where they undergo degradation (PubMed: 20516149 , PubMed: 21636303 , PubMed: 21743475 , PubMed: 28104892). The BAG6/BAT3 complex is involved in the post-translational delivery of tail- anchored/type II transmembrane proteins to the endoplasmic reticulum membrane. Recruited to ribosomes, it interacts with the transmembrane region of newly synthesized tail-anchored proteins and together with SGTA and ASNA1 mediates their delivery to the endoplasmic reticulum (PubMed: 20516149 , PubMed: 20676083 , PubMed: 25535373 , PubMed: 28104892). Client proteins that cannot be properly delivered to the endoplasmic reticulum are ubiquitinated by RNF126,

an E3 ubiquitin-protein ligase associated with BAG6 and are sorted to the proteasome (PubMed:[24981174](#), PubMed:[27193484](#), PubMed:[28104892](#)). SGTA which prevents the recruitment of RNF126 to BAG6 may negatively regulate the ubiquitination and the proteasomal degradation of client proteins (PubMed:[23129660](#), PubMed:[25179605](#), PubMed:[27193484](#)). Similarly, the BAG6/BAT3 complex also functions as a sorting platform for proteins of the secretory pathway that are mislocalized to the cytosol either delivering them to the proteasome for degradation or to the endoplasmic reticulum (PubMed:[21743475](#)). The BAG6/BAT3 complex also plays a role in the endoplasmic reticulum-associated degradation (ERAD), a quality control mechanism that eliminates unwanted proteins of the endoplasmic reticulum through their retrotranslocation to the cytosol and their targeting to the proteasome. It maintains these retrotranslocated proteins in an unfolded yet soluble state condition in the cytosol to ensure their proper delivery to the proteasome (PubMed:[21636303](#)). BAG6 is also required for selective ubiquitin-mediated degradation of defective nascent chain polypeptides by the proteasome. In this context, it may participate in the production of antigenic peptides and play a role in antigen presentation in immune response (By similarity). BAG6 is also involved in endoplasmic reticulum stress-induced pre-emptive quality control, a mechanism that selectively attenuates the translocation of newly synthesized proteins into the endoplasmic reticulum and reroutes them to the cytosol for proteasomal degradation. BAG6 may ensure the proper degradation of these proteins and thereby protects the endoplasmic reticulum from protein overload upon stress (PubMed:[26565908](#)). By inhibiting the polyubiquitination and subsequent proteasomal degradation of HSPA2 it may also play a role in the assembly of the synaptonemal complex during spermatogenesis (By similarity). Also positively regulates apoptosis by interacting with and stabilizing the proapoptotic factor AIFM1 (By similarity). By controlling the steady-state expression of the IGF1R receptor, indirectly regulates the insulin-like growth factor receptor signaling pathway (PubMed:[26692333](#)).

Cellular Location

Cytoplasm, cytosol. Nucleus. Secreted, extracellular exosome Note=Normally localized in cytosol and nucleus, it can also be released extracellularly, in exosomes, by tumor and myeloid dendritic cells (PubMed:[18055229](#), PubMed:[18852879](#)). Cytoplasmic retention is due to interaction with GET4 (PubMed:[29042515](#)).

Tissue Location

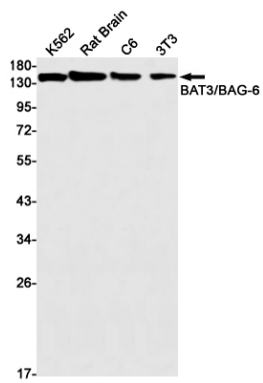
Expressed by immature dendritic cells (at protein level).

Background

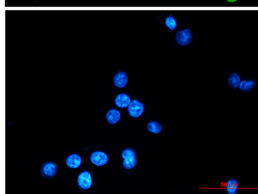
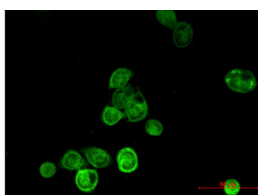
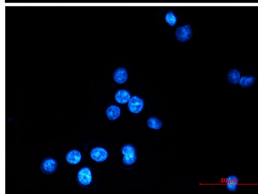
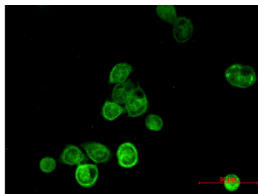
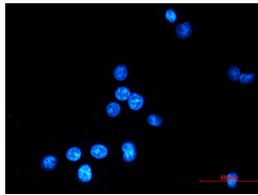
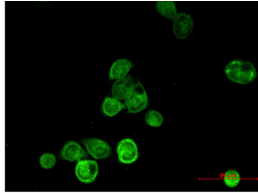
Chaperone that plays a key role in various processes such as apoptosis, insertion of tail-anchored (TA) membrane proteins to the endoplasmic reticulum membrane and regulation of chromatin. Acts in part by regulating stability of proteins and their degradation by the proteasome. Participates in endoplasmic reticulum stress-induced apoptosis via its interaction with AIFM1/AIF by regulating AIFM1/AIF stability and preventing its degradation.

Images

Western blot analysis of BAT3/BAG6 in K562, rat Brain, C6, 3T3 lysates using BAT3 antibody.



Immunocytochemistry analysis of BAT3/BAG6 (green) in MCF-7 using BAT3/BAG6 antibody, and DAPI(blue)



Please note: All products are 'FOR RESEARCH USE ONLY. NOT FOR USE IN DIAGNOSTIC OR THERAPEUTIC PROCEDURES'.