

BAP31 Rabbit mAb

Catalog # AP75145

Product Information

Application	WB, IHC-P, IHC-F
Primary Accession	P51572
Reactivity	Human, Mouse
Host	Rabbit
Clonality	Monoclonal Antibody
Isotype	IgG
Conjugate	Unconjugated
Purification	Affinity Purified
Calculated MW	28 KDa

Additional Information

Other Names	BCAP31
Dilution	WB~~1:1000-1:5000 IHC-P~~N/A IHC-F~~N/A
Format	Liquid in 50mM Tris-Glycine(pH 7.4), 0.15M NaCl, 40%Glycerol, 0.01% sodium azide and 0.05% BSA.
Storage	Store at 4°C short term. Aliquot and store at -20°C long term. Avoid freeze/thaw cycles.

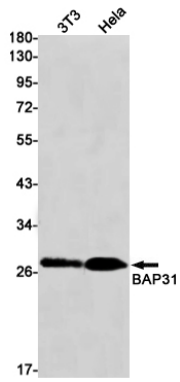
Protein Information

Background

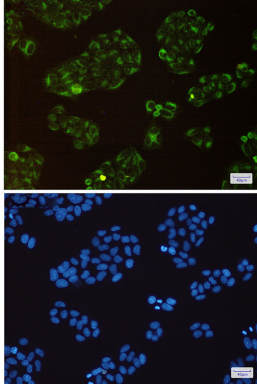
This gene encodes a member of the B-cell receptor associated protein 31 superfamily. The encoded protein is a multi-pass transmembrane protein of the endoplasmic reticulum that is involved in the anterograde transport of membrane proteins from the endoplasmic reticulum to the Golgi and in caspase 8-mediated apoptosis. Microdeletions in this gene are associated with contiguous ABCD1/DXS1375E deletion syndrome (CADD5), a neonatal disorder. Alternative splicing of this gene results in multiple transcript variants. Two related pseudogenes have been identified on chromosome 16.

Images

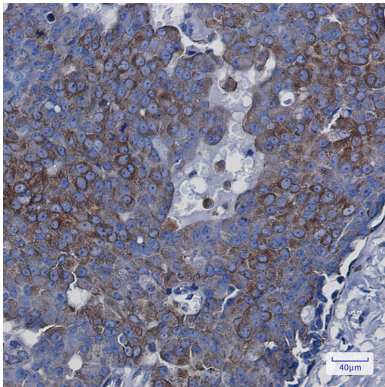
Western blot analysis of BAP31 in K562, Hela lysates using BAP31 antibody.



Immunocytochemistry analysis of BAP31(green) in HeLa using BAP31 antibody, and DAPI(blue)



Immunohistochemistry analysis of paraffin-embedded Human breast cancer using BAP31 antibody. High-pressure and temperature Sodium Citrate pH 6.0 was used for antigen retrieval.



Please note: All products are 'FOR RESEARCH USE ONLY. NOT FOR USE IN DIAGNOSTIC OR THERAPEUTIC PROCEDURES'.