

# Band 3 Rabbit mAb

Catalog # AP75144

## Product Information

---

Application	WB
Primary Accession	<a href="#">P02730</a>
Reactivity	Human, Mouse
Host	Rabbit
Clonality	Monoclonal Antibody
Calculated MW	101792

## Additional Information

---

Gene ID	6521
Other Names	SLC4A1
Dilution	WB~~1/500-1/1000
Format	50mM Tris-Glycine(pH 7.4), 0.15M NaCl, 40%Glycerol, 0.01% sodium azide and 0.05% BSA.

## Protein Information

---

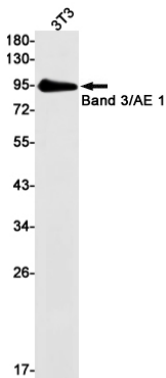
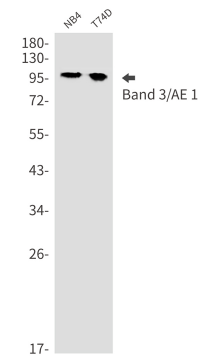
Name	SLC4A1 ( <a href="#">HGNC:11027</a> )
Synonyms	AE1, DI, EPB3
Function	Functions both as a transporter that mediates electroneutral anion exchange across the cell membrane and as a structural protein (PubMed: <a href="#">10926824</a> , PubMed: <a href="#">14734552</a> , PubMed: <a href="#">1538405</a> , PubMed: <a href="#">16227998</a> , PubMed: <a href="#">20151848</a> , PubMed: <a href="#">24121512</a> , PubMed: <a href="#">28387307</a> , PubMed: <a href="#">35835865</a> ). Component of the ankyrin-1 complex of the erythrocyte membrane; required for normal flexibility and stability of the erythrocyte membrane and for normal erythrocyte shape via the interactions of its cytoplasmic domain with cytoskeletal proteins, glycolytic enzymes, and hemoglobin (PubMed: <a href="#">1538405</a> , PubMed: <a href="#">20151848</a> , PubMed: <a href="#">35835865</a> ). Functions as a transporter that mediates the 1:1 exchange of inorganic anions across the erythrocyte membrane. Mediates chloride-bicarbonate exchange in the kidney, and is required for normal acidification of the urine (PubMed: <a href="#">10926824</a> , PubMed: <a href="#">14734552</a> , PubMed: <a href="#">16227998</a> , PubMed: <a href="#">24121512</a> , PubMed: <a href="#">28387307</a> ).
Cellular Location	Cell membrane; Multi-pass membrane protein. Basolateral cell membrane; Multi-pass membrane protein. Note=Detected in the erythrocyte cell membrane and on the basolateral membrane of alpha-intercalated cells in the collecting duct in the kidney.

Tissue Location

Detected in erythrocytes (at protein level).

Images

---



Please note: All products are 'FOR RESEARCH USE ONLY. NOT FOR USE IN DIAGNOSTIC OR THERAPEUTIC PROCEDURES'.