

AZI2 Rabbit mAb

Catalog # AP75135

Product Information

Application	WB
Primary Accession	Q9H6S1
Reactivity	Human, Rat
Host	Rabbit
Clonality	Monoclonal Antibody
Calculated MW	44935

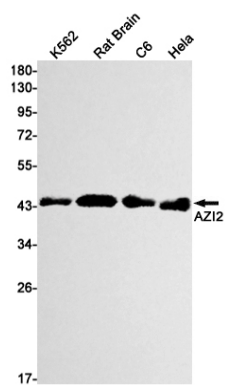
Additional Information

Gene ID	64343
Other Names	AZI2
Dilution	WB~~1/500-1/1000
Format	50mM Tris-Glycine(pH 7.4), 0.15M NaCl, 40%Glycerol, 0.01% sodium azide and 0.05% BSA.
Storage	Store at 4°C short term. Aliquot and store at -20°C long term. Avoid freeze/thaw cycles.

Protein Information

Name	AZI2
Synonyms	NAP1 {ECO:0000303 PubMed:14560022}, TBKB
Function	Adapter protein which binds TBK1 and IKBKE playing a role in antiviral innate immunity (PubMed: 14560022 , PubMed: 21931631). Activates serine/threonine-protein kinase TBK1 and facilitates its oligomerization (PubMed: 14560022 , PubMed: 21931631). Enhances the phosphorylation of NF-kappa-B p65 subunit RELA by TBK1 (PubMed: 14560022 , PubMed: 21931631). Promotes TBK1-induced as well as TNF-alpha or PMA-induced activation of NF-kappa-B (PubMed: 14560022 , PubMed: 21931631). Participates in IFNB promoter activation via TICAM1 (PubMed: 15611223).
Cellular Location	Cytoplasm.
Tissue Location	Widely expressed (PubMed:14560022). Abundant expression seen in the pancreas and testis (PubMed:14560022)

Images



Please note: All products are 'FOR RESEARCH USE ONLY. NOT FOR USE IN DIAGNOSTIC OR THERAPEUTIC PROCEDURES'.