

# ASS1 Rabbit mAb

Catalog # AP75113

## Product Information

---

<b>Application</b>	WB, IHC-P, IHC-F, IP, ICC
<b>Primary Accession</b>	<a href="#">P00966</a>
<b>Reactivity</b>	Human, Rat
<b>Host</b>	Rabbit
<b>Clonality</b>	Monoclonal Antibody
<b>Calculated MW</b>	46530

## Additional Information

---

<b>Gene ID</b>	445
<b>Other Names</b>	ASS1
<b>Dilution</b>	WB~~1/500-1/1000 IHC-P~~N/A IHC-F~~N/A IP~~1/20 ICC~~N/A
<b>Format</b>	50mM Tris-Glycine(pH 7.4), 0.15M NaCl, 40%Glycerol, 0.01% sodium azide and 0.05% BSA.

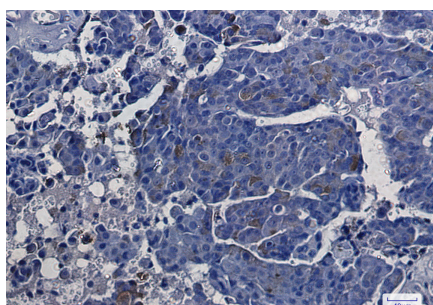
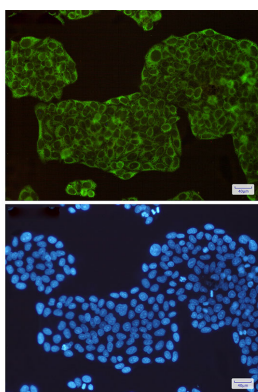
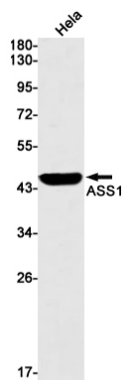
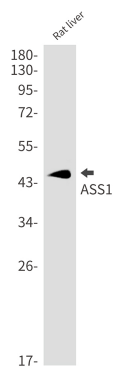
## Protein Information

---

<b>Name</b>	ASS1 ( <a href="#">HGNC:758</a> )
<b>Function</b>	One of the enzymes of the urea cycle, the metabolic pathway transforming neurotoxic amonia produced by protein catabolism into inocuous urea in the liver of ureotelic animals. Catalyzes the formation of arginosuccinate from aspartate, citrulline and ATP and together with ASL it is responsible for the biosynthesis of arginine in most body tissues.
<b>Cellular Location</b>	Cytoplasm, cytosol
<b>Tissue Location</b>	Expressed in adult liver.

## Images

---



Please note: All products are 'FOR RESEARCH USE ONLY. NOT FOR USE IN DIAGNOSTIC OR THERAPEUTIC PROCEDURES'.