

Annexin 2 Rabbit mAb

Catalog # AP75078

Product Information

Application	WB, IHC-P, FC
Primary Accession	P07355
Reactivity	Rat, Human, Mouse
Host	Rabbit
Clonality	Monoclonal Antibody
Isotype	IgG
Conjugate	Unconjugated
Purification	Affinity Purified
Calculated MW	38604

Additional Information

Gene ID	302
Other Names	ANXA2
Dilution	WB~~1:1000-1:5000 IHC-P~~N/A FC~~1:10-1:100
Format	Liquid in 50mM Tris-Glycine(pH 7.4), 0.15M NaCl, 40%Glycerol, 0.01% sodium azide and 0.05% BSA.
Storage	Store at 4°C short term. Aliquot and store at -20°C long term. Avoid freeze/thaw cycles.

Protein Information

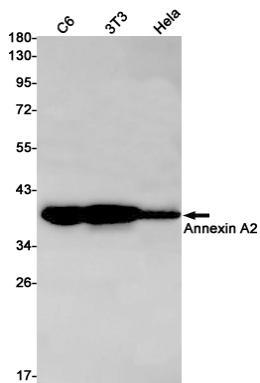
Name	ANXA2
Synonyms	ANX2, ANX2L4, CAL1H, LPC2D
Function	Calcium-regulated membrane-binding protein whose affinity for calcium is greatly enhanced by anionic phospholipids. It binds two calcium ions with high affinity. May be involved in heat-stress response. Inhibits PCSK9-enhanced LDLR degradation, probably reduces PCSK9 protein levels via a translational mechanism but also competes with LDLR for binding with PCSK9 (PubMed: 18799458 , PubMed: 22848640 , PubMed: 24808179). Binds to endosomes damaged by phagocytosis of particulate wear debris and participates in endosomal membrane stabilization, thereby limiting NLRP3 inflammasome activation (By similarity). Required for endothelial cell surface plasmin generation and may support fibrinolytic surveillance and neoangiogenesis (By similarity).
Cellular Location	Secreted, extracellular space, extracellular matrix, basement membrane.

Melanosome. Note=In the lamina beneath the plasma membrane. Identified by mass spectrometry in melanosome fractions from stage I to stage IV. Translocated from the cytoplasm to the cell surface through a Golgi-independent mechanism

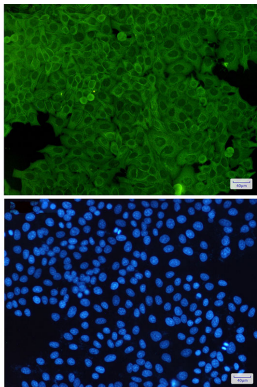
Background

Originally identified as a protein inhibitor of phospholipase A2, annexin A2 has subsequently been shown to interact with an array of protein and non-protein partners, including F-actin, spectrin, SNARE complexes, RNA, and virus particles.

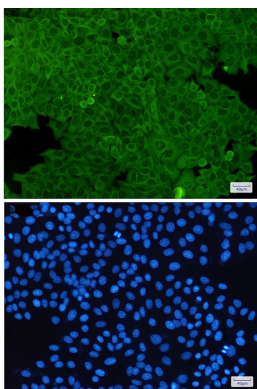
Images

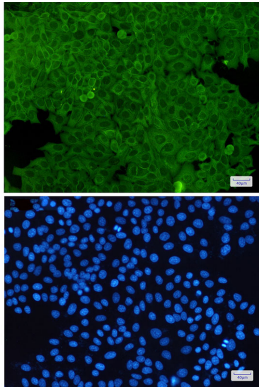


Western blot analysis of Annexin A2 in C6, 3T3, HeLa lysates using Annexin A2 antibody.



Immunocytochemistry analysis of Annexin A2(green) in HeLa using Annexin A2 antibody, and DAPI(blue)





Please note: All products are 'FOR RESEARCH USE ONLY. NOT FOR USE IN DIAGNOSTIC OR THERAPEUTIC PROCEDURES'.