

ALIX Rabbit mAb

Catalog # AP75052

Product Information

Application	WB
Primary Accession	Q8WUM4
Reactivity	Human
Host	Rabbit
Clonality	Monoclonal Antibody
Calculated MW	96023

Additional Information

Gene ID	10015
Other Names	PDCD6IP
Dilution	WB~~1/500-1/1000
Format	50mM Tris-Glycine(pH 7.4), 0.15M NaCl, 40%Glycerol, 0.01% sodium azide and 0.05% BSA.
Storage	Store at 4°C short term. Aliquot and store at -20°C long term. Avoid freeze/thaw cycles.

Protein Information

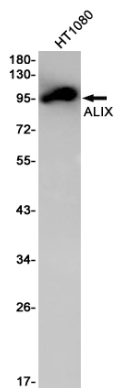
Name	PDCD6IP (HGNC:8766)
Synonyms	AIP1, ALIX, KIAA1375
Function	Multifunctional protein involved in endocytosis, multivesicular body biogenesis, membrane repair, cytokinesis, apoptosis and maintenance of tight junction integrity. Class E VPS protein involved in concentration and sorting of cargo proteins of the multivesicular body (MVB) for incorporation into intraluminal vesicles (ILVs) that are generated by invagination and scission from the limiting membrane of the endosome. Binds to the phospholipid lysobisphosphatidic acid (LBPA) which is abundant in MVBs internal membranes. The MVB pathway requires the sequential function of ESCRT-O, -I, -II and -III complexes (PubMed: 14739459). The ESCRT machinery also functions in topologically equivalent membrane fission events, such as the terminal stages of cytokinesis (PubMed: 17556548 , PubMed: 17853893). Adapter for a subset of ESCRT-III proteins, such as CHMP4, to function at distinct membranes. Required for completion of cytokinesis (PubMed: 17556548 , PubMed: 17853893 , PubMed: 18641129). May play a role in the regulation of both apoptosis and cell proliferation. Regulates exosome biogenesis in concert with SDC1/4 and SDCBP (PubMed: 22660413). By

interacting with F-actin, PARD3 and TJP1 secures the proper assembly and positioning of actomyosin-tight junction complex at the apical sides of adjacent epithelial cells that defines a spatial membrane domain essential for the maintenance of epithelial cell polarity and barrier (By similarity).

Cellular Location

Cytoplasm, cytosol {ECO:0000250|UniProtKB:Q9QZA2}. Melanosome. Cytoplasm, cytoskeleton, microtubule organizing center, centrosome. Secreted, extracellular exosome. Cell junction, tight junction {ECO:0000250|UniProtKB:Q9WU78}. Midbody, Midbody ring Note=Identified by mass spectrometry in melanosome fractions from stage I to stage IV. Colocalized with CEP55 at centrosomes of non-dividing cells. Component of the actomyosin-tight junction complex (By similarity). PDCD6IP targeting to the midbody requires the interaction with CEP55 (PubMed:18641129). {ECO:0000250|UniProtKB:Q9QZA2, ECO:0000250|UniProtKB:Q9WU78, ECO:0000269|PubMed:17081065, ECO:0000269|PubMed:17556548, ECO:0000269|PubMed:17853893, ECO:0000269|PubMed:18641129}

Images



Please note: All products are 'FOR RESEARCH USE ONLY. NOT FOR USE IN DIAGNOSTIC OR THERAPEUTIC PROCEDURES'.