

Ferritin Heavy Chain Rabbit mAb

Catalog # AP74984

Product Information

Application	WB, ICC
Primary Accession	P02794
Reactivity	Human, Mouse, Rat, Hamster
Host	Rabbit
Clonality	Monoclonal Antibody
Calculated MW	21226

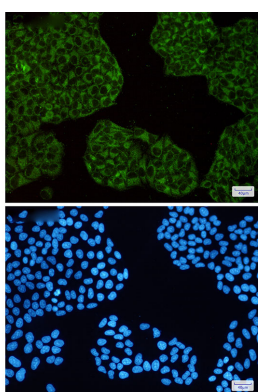
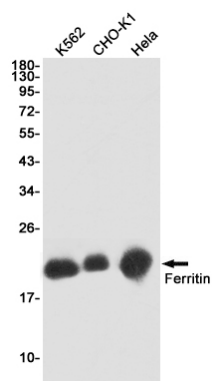
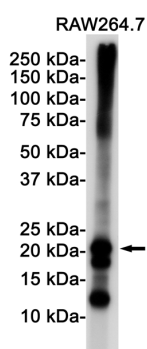
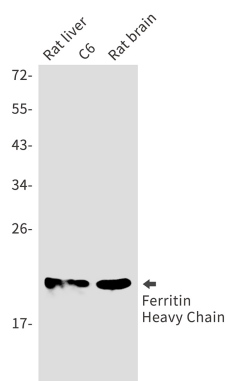
Additional Information

Gene ID	2495
Other Names	FTH1
Dilution	WB~~1/500-1/1000 ICC~~N/A
Format	50mM Tris-Glycine(pH 7.4), 0.15M NaCl, 40%Glycerol, 0.01% sodium azide and 0.05% BSA.

Protein Information

Name	FTH1
Synonyms	FTH, FTHL6
Function	Stores iron in a soluble, non-toxic, readily available form. Important for iron homeostasis. Has ferroxidase activity (PubMed: 9003196). Iron is taken up in the ferrous form and deposited as ferric hydroxides after oxidation (PubMed: 9003196). Also plays a role in delivery of iron to cells (By similarity). Mediates iron uptake in capsule cells of the developing kidney (By similarity). Delivery to lysosomes is mediated by the cargo receptor NCOA4 for autophagic degradation and release of iron (PubMed: 24695223 , PubMed: 26436293).
Cellular Location	Cytoplasm. Lysosome. Cytoplasmic vesicle, autophagosome
Tissue Location	Expressed in the liver.

Images



Please note: All products are 'FOR RESEARCH USE ONLY. NOT FOR USE IN DIAGNOSTIC OR THERAPEUTIC PROCEDURES'.