

Cytokeratin 10 Rabbit mAb

Catalog # AP74951

Product Information

Application	WB, IHC-P
Primary Accession	P13645
Reactivity	Human, Mouse, Rat, Hamster
Host	Rabbit
Clonality	Monoclonal Antibody
Calculated MW	58827

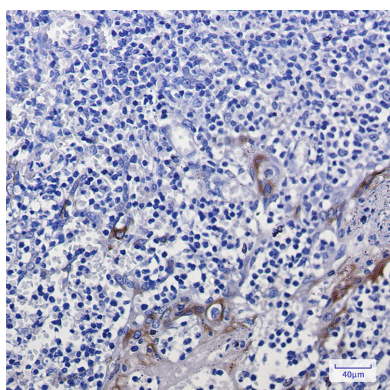
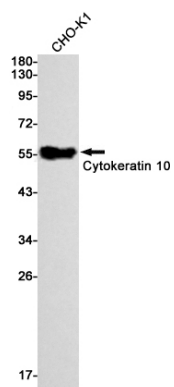
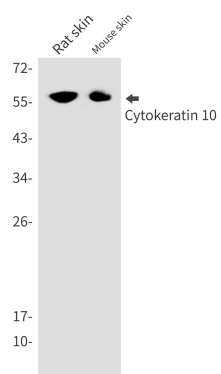
Additional Information

Gene ID	3858
Other Names	KRT10
Dilution	WB~~1/500-1/1000 IHC-P~~N/A
Format	50mM Tris-Glycine(pH 7.4), 0.15M NaCl, 40%Glycerol, 0.01% sodium azide and 0.05% BSA.
Storage	Store at 4°C short term. Aliquot and store at -20°C long term. Avoid freeze/thaw cycles.

Protein Information

Name	KRT10
Synonyms	KPP
Function	Plays a role in the establishment of the epidermal barrier on plantar skin (By similarity). Involved in the maintenance of cell layer development and keratin filament bundles in suprabasal cells of the epithelium (By similarity).
Cellular Location	Secreted, extracellular space. Cell surface. Cytoplasm
Tissue Location	Seen in all suprabasal cell layers including stratum corneum. Expressed on the surface of lung cell lines (PubMed:19627498). Localized on the surface of desquamated nasal epithelial cells (at protein level) (PubMed:12427098)

Images



Please note: All products are 'FOR RESEARCH USE ONLY. NOT FOR USE IN DIAGNOSTIC OR THERAPEUTIC PROCEDURES'.