

CD146 Rabbit mAb

Catalog # AP74935

Product Information

Application	WB, IHC-P, FC
Primary Accession	P43121
Reactivity	Rat, Human, Mouse
Host	Rabbit
Clonality	Monoclonal Antibody
Isotype	IgG
Conjugate	Unconjugated
Purification	Affinity Purified
Calculated MW	71607

Additional Information

Gene ID	4162
Other Names	MCAM
Dilution	WB~~1:500-1:1000 IHC-P~~N/A FC~~1:20-1:100
Format	Liquid in 50mM Tris-Glycine(pH 7.4), 0.15M NaCl, 40%Glycerol, 0.01% sodium azide and 0.05% BSA.
Storage	Store at 4°C short term. Aliquot and store at -20°C long term. Avoid freeze/thaw cycles.

Protein Information

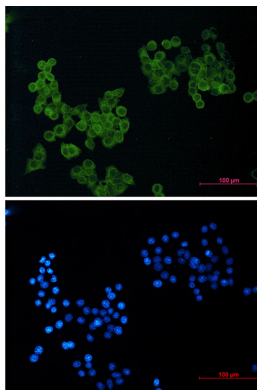
Name	MCAM
Synonyms	MUC18
Function	Plays a role in cell adhesion, and in cohesion of the endothelial monolayer at intercellular junctions in vascular tissue. Its expression may allow melanoma cells to interact with cellular elements of the vascular system, thereby enhancing hematogeneous tumor spread. Could be an adhesion molecule active in neural crest cells during embryonic development. Acts as a surface receptor that triggers tyrosine phosphorylation of FYN and PTK2/FAK1, and a transient increase in the intracellular calcium concentration.
Cellular Location	Membrane; Single-pass type I membrane protein.
Tissue Location	Detected in endothelial cells in vascular tissue throughout the body. May appear at the surface of neural crest cells during their embryonic migration. Appears to be limited to vascular smooth muscle in normal adult tissues.

Associated with tumor progression and the development of metastasis in human malignant melanoma. Expressed most strongly on metastatic lesions and advanced primary tumors and is only rarely detected in benign melanocytic nevi and thin primary melanomas with a low probability of metastasis

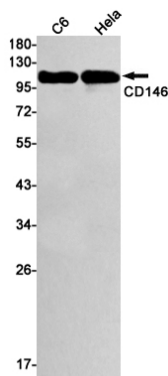
Background

CD146 plays a role in cell adhesion, and in cohesion of the endothelial monolayer at intercellular junctions in vascular tissue. Its expression may allow melanoma cells to interact with cellular elements of the vascular system, thereby enhancing hematogeneous tumor spread. Could be an adhesion molecule active in neural crest cells during embryonic development.

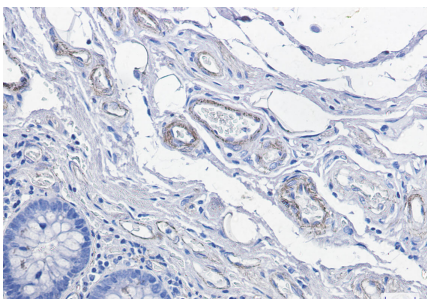
Images



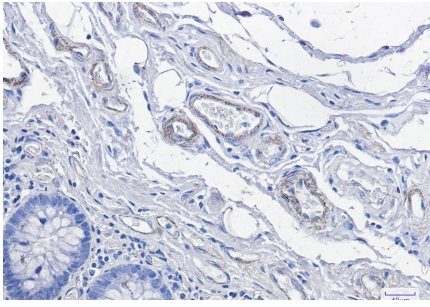
Immunocytochemistry analysis of CD146 (green) in HeLa using CD146 antibody, and DAPI (blue).



Western blot analysis of CD146 in C6, HeLa lysates using CD146 antibody.



Immunohistochemistry analysis of paraffin-embedded Human colon cancer tissue using CD146 antibody. High-pressure and temperature Sodium Citrate pH 6.0 was used for antigen retrieval.



Please note: All products are 'FOR RESEARCH USE ONLY. NOT FOR USE IN DIAGNOSTIC OR THERAPEUTIC PROCEDURES'.