

# Cytokeratin 4 Rabbit mAb

Catalog # AP74899

## Product Information

---

<b>Application</b>	WB, IHC-P, FC, IP
<b>Primary Accession</b>	<a href="#">P19013</a>
<b>Reactivity</b>	Human
<b>Host</b>	Rabbit
<b>Clonality</b>	Monoclonal Antibody
<b>Isotype</b>	IgG
<b>Conjugate</b>	Unconjugated
<b>Purification</b>	Affinity Purified
<b>Calculated MW</b>	56144

## Additional Information

---

<b>Gene ID</b>	3851
<b>Other Names</b>	KRT4
<b>Dilution</b>	WB~~1:1000-1:5000 IHC-P~~N/A FC~~1:100-1:500 IP~~1:10-1:100
<b>Format</b>	Liquid in 50mM Tris-Glycine(pH 7.4), 0.15M NaCl, 40%Glycerol, 0.01% sodium azide and 0.05% BSA.
<b>Storage</b>	Store at 4°C short term. Aliquot and store at -20°C long term. Avoid freeze/thaw cycles.

## Protein Information

---

<b>Name</b>	KRT4
<b>Synonyms</b>	CYK4
<b>Tissue Location</b>	Detected in the suprabasal layer of the stratified epithelium of the esophagus, exocervix, vagina, mouth and lingual mucosa, and in cells and cell clusters in the mucosa and serous gland ducts of the esophageal submucosa (at protein level). Expressed widely in the exocervix and esophageal epithelium, with lowest levels detected in the basal cell layer.

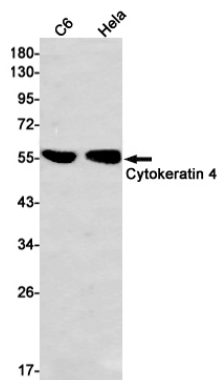
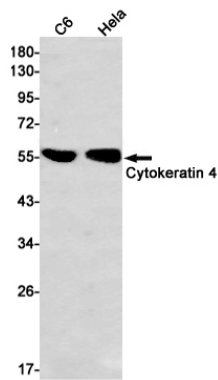
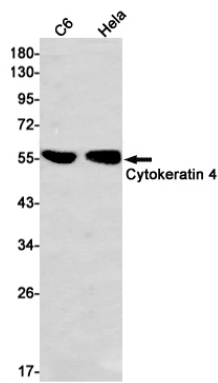
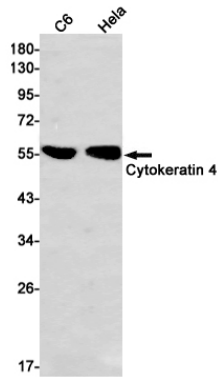
## Background

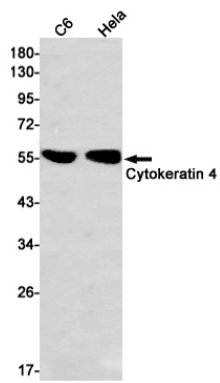
---

Cytokeratins are a subfamily of intermediate filament keratins that are characterized by a remarkable biochemical diversity, which is represented in human epithelial tissues by at least 20 different polypeptides.

# Images

Western blot analysis of Cytokeratin 4 in C6, HeLa lysates using Cytokeratin 4 antibody.





Please note: All products are 'FOR RESEARCH USE ONLY. NOT FOR USE IN DIAGNOSTIC OR THERAPEUTIC PROCEDURES'.