

# CRABP2 Rabbit mAb

Catalog # AP74852

## Product Information

---

<b>Application</b>	WB, ICC
<b>Primary Accession</b>	<a href="#">P29373</a>
<b>Host</b>	Rabbit
<b>Clonality</b>	Monoclonal Antibody
<b>Calculated MW</b>	15693

## Additional Information

---

<b>Gene ID</b>	1382
<b>Other Names</b>	CRABP2
<b>Dilution</b>	WB~~1/500-1/1000 ICC~~N/A
<b>Format</b>	50mM Tris-Glycine(pH 7.4), 0.15M NaCl, 40%Glycerol, 0.01% sodium azide and 0.05% BSA.
<b>Storage</b>	Store at 4°C short term. Aliquot and store at -20°C long term. Avoid freeze/thaw cycles.

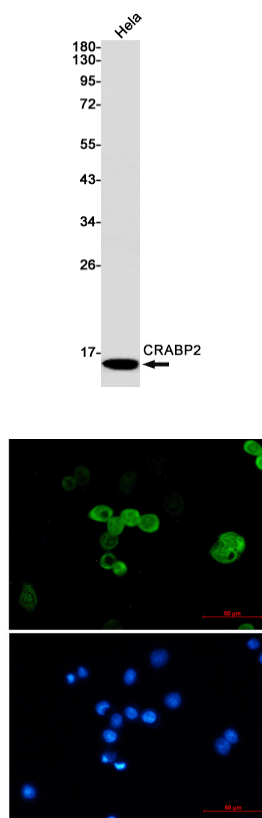
## Protein Information

---

<b>Name</b>	CRABP2
<b>Function</b>	Transports retinoic acid to the nucleus. Regulates the access of retinoic acid to the nuclear retinoic acid receptors.
<b>Cellular Location</b>	Cytoplasm. Endoplasmic reticulum. Nucleus. Note=Upon ligand binding, a conformation change exposes a nuclear localization motif and the protein is transported into the nucleus

## Images

---



Please note: All products are 'FOR RESEARCH USE ONLY. NOT FOR USE IN DIAGNOSTIC OR THERAPEUTIC PROCEDURES'.