

MMP14 Rabbit mAb

Catalog # AP74828

Product Information

Application	WB, IHC-P, IP
Primary Accession	P50281
Reactivity	Human, Hamster
Host	Rabbit
Clonality	Monoclonal Antibody
Calculated MW	65894

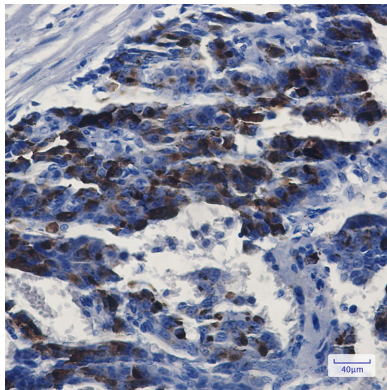
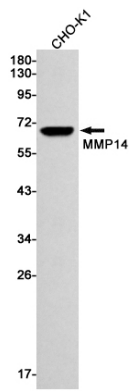
Additional Information

Gene ID	4323
Other Names	MMP14
Dilution	WB~~1/500-1/1000 IHC-P~~N/A IP~~N/A
Format	Liquid

Protein Information

Name	MMP14
Function	Endopeptidase that degrades various components of the extracellular matrix such as collagen (PubMed: 8015608). Essential for pericellular collagenolysis and modeling of skeletal and extraskeletal connective tissues during development (By similarity). Activates progelatinase A/MMP2, thereby acting as a positive regulator of cell growth and migration (PubMed: 22065321 , PubMed: 8015608). Involved in the formation of the fibrovascular tissues in association with pro-MMP2 (PubMed: 12714657 , PubMed: 22065321). May be involved in actin cytoskeleton reorganization by cleaving PTK7 (PubMed: 20837484). Acts as a regulator of Notch signaling by mediating cleavage and inhibition of DLL1 (PubMed: 21572390). Cleaves ADGRB1 to release vasculostatin-40 which inhibits angiogenesis (PubMed: 22330140). Acts as a negative regulator of the GDF15-GFRAL aversive response by mediating cleavage and inactivation of GFRAL (PubMed: 35177851).
Cellular Location	Cell membrane; Single-pass type I membrane protein. Melanosome. Cytoplasm Note=Identified by mass spectrometry in melanosome fractions from stage I to stage IV (PubMed:17081065). Forms a complex with BST2 and localizes to the cytoplasm (PubMed:17081065)
Tissue Location	Expressed in stromal cells of colon, breast, and head and neck. Expressed in lung tumors.

Images



Please note: All products are 'FOR RESEARCH USE ONLY. NOT FOR USE IN DIAGNOSTIC OR THERAPEUTIC PROCEDURES'.