

# ELOVL5 Rabbit mAb

Catalog # AP74814

## Product Information

---

Application	WB, ICC
Primary Accession	<a href="#">Q9NYP7</a>
Reactivity	Human
Host	Rabbit
Clonality	Monoclonal Antibody
Calculated MW	35293

## Additional Information

---

Gene ID	60481
Other Names	ELOVL5
Dilution	WB~~1/500-1/1000 ICC~~N/A
Format	50mM Tris-Glycine(pH 7.4), 0.15M NaCl, 40%Glycerol, 0.01% sodium azide and 0.05% BSA.
Storage	Store at 4°C short term. Aliquot and store at -20°C long term. Avoid freeze/thaw cycles.

## Protein Information

---

Name	ELOVL5 {ECO:0000255   HAMAP-Rule:MF_03205}
Synonyms	ELOVL2
Function	Catalyzes the first and rate-limiting reaction of the four reactions that constitute the long-chain fatty acids elongation cycle. This endoplasmic reticulum-bound enzymatic process allows the addition of 2 carbons to the chain of long- and very long-chain fatty acids (VLCFAs) per cycle. Condensing enzyme that acts specifically toward polyunsaturated acyl-CoA with the higher activity toward C18:3(n-6) acyl-CoA. May participate in the production of monounsaturated and of polyunsaturated VLCFAs of different chain lengths that are involved in multiple biological processes as precursors of membrane lipids and lipid mediators (By similarity) (PubMed: <a href="#">10970790</a> , PubMed: <a href="#">20937905</a> ). In conditions where the essential linoleic and alpha linoleic fatty acids are lacking it is also involved in the synthesis of Mead acid from oleic acid (By similarity).
Cellular Location	Endoplasmic reticulum membrane {ECO:0000255   HAMAP-Rule:MF_03205, ECO:0000269   PubMed:20937905}; Multi- pass membrane protein {ECO:0000255   HAMAP-Rule:MF_03205}. Cell projection, dendrite

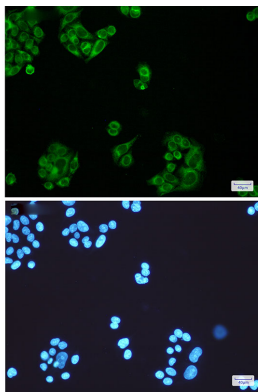
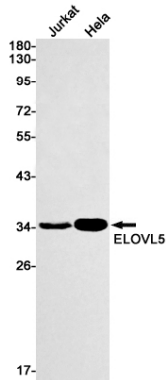
{ECO:0000255|HAMAP-Rule:MF\_03205, ECO:0000269|PubMed:25065913}.  
Note=In Purkinje cells, the protein localizes to the soma and proximal portion  
of the dendritic tree {ECO:0000255|HAMAP-Rule:MF\_03205,  
ECO:0000269|PubMed:25065913}

## Tissue Location

Ubiquitous. Highly expressed in the adrenal gland and testis. Weakly  
expressed in prostate, lung and brain. Expressed in the cerebellum.

## Images

---



Please note: All products are 'FOR RESEARCH USE ONLY. NOT FOR USE IN DIAGNOSTIC OR THERAPEUTIC PROCEDURES'.