

OMD Antibody (Center)

Purified Rabbit Polyclonal Antibody (Pab)

Catalog # AP7474c

Product Information

Application	WB, IHC-P, E
Primary Accession	Q99983
Reactivity	Human
Host	Rabbit
Clonality	Polyclonal
Isotype	Rabbit IgG
Clone Names	RB18529
Calculated MW	49492
Antigen Region	234-263

Additional Information

Gene ID	4958
Other Names	Osteomodulin, Keratan sulfate proteoglycan osteomodulin, KSPG osteomodulin, Osteoadherin, OSAD, OMD, SLRR2C
Target/Specificity	This OMD antibody is generated from rabbits immunized with a KLH conjugated synthetic peptide between 234-263 amino acids from the Central region of human OMD.
Dilution	WB~~1:1000 IHC-P~~1:100~500 E~~Use at an assay dependent concentration.
Format	Purified polyclonal antibody supplied in PBS with 0.09% (W/V) sodium azide. This antibody is prepared by Saturated Ammonium Sulfate (SAS) precipitation followed by dialysis against PBS.
Storage	Maintain refrigerated at 2-8°C for up to 2 weeks. For long term storage store at -20°C in small aliquots to prevent freeze-thaw cycles.
Precautions	OMD Antibody (Center) is for research use only and not for use in diagnostic or therapeutic procedures.

Protein Information

Name	OMD
Synonyms	SLRR2C
Function	May be implicated in biomineralization processes. Has a function in binding of osteoblasts via the alpha(V)beta(3)-integrin.

Cellular Location	Secreted, extracellular space, extracellular matrix
Tissue Location	Bone specific.

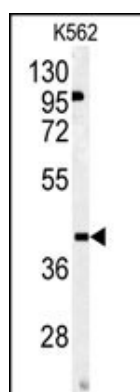
Background

OMD may be implicated in biomineralization processes. This protein has a function in binding of osteoblasts via the $\alpha(V)\beta(3)$ -integrin.

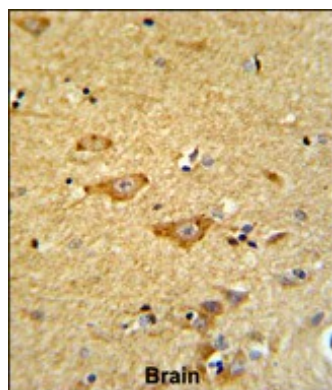
References

Onnerfjord P.J. Biol. Chem. 279:26-33(2004)
 Clark H.F., Gurney A.L.Genome Res. 13:2265-2270(2003)

Images



Western blot analysis of OMD antibody (Center)(Cat.#AP7474c) in K562 cell line lysates (35ug/lane). OMD (arrow) was detected using the purified Pab.



Formalin-fixed and paraffin-embedded human brain reacted with OMD Antibody (Center), which was peroxidase-conjugated to the secondary antibody, followed by DAB staining. This data demonstrates the use of this antibody for immunohistochemistry; clinical relevance has not been evaluated.

Please note: All products are 'FOR RESEARCH USE ONLY. NOT FOR USE IN DIAGNOSTIC OR THERAPEUTIC PROCEDURES'.