

AGTR1 Polyclonal Antibody

Catalog # AP74339

Product Information

Application	WB, E
Primary Accession	P30556
Reactivity	Human, Mouse, Rat
Host	Rabbit
Clonality	Polyclonal
Calculated MW	41061

Additional Information

Gene ID	185
Other Names	Type-1 angiotensin II receptor (AT1AR) (AT1BR) (Angiotensin II type-1 receptor) (AT1)
Dilution	WB~~WB 1:500-2000, ELISA 1:10000-20000 E~~N/A
Format	Liquid in PBS containing 50% glycerol, 0.5% BSA and 0.09% (W/V) sodium azide.
Storage Conditions	-20°C

Protein Information

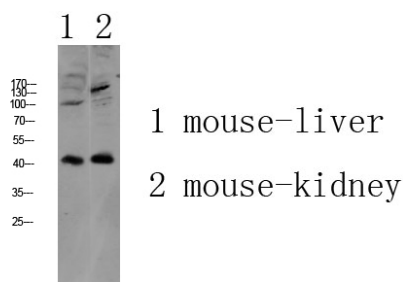
Name	AGTR1 (HGNC:336)
Function	Receptor for angiotensin II, a vasoconstricting peptide, which acts as a key regulator of blood pressure and sodium retention by the kidney (PubMed: 15611106 , PubMed: 1567413 , PubMed: 25913193 , PubMed: 26420482 , PubMed: 30639100 , PubMed: 32079768 , PubMed: 8987975). The activated receptor in turn couples to G-alpha proteins G(q) (GNAQ, GNA11, GNA14 or GNA15) and thus activates phospholipase C and increases the cytosolic Ca(2+) concentrations, which in turn triggers cellular responses such as stimulation of protein kinase C (PubMed: 15611106).
Cellular Location	Cell membrane; Multi-pass membrane protein
Tissue Location	Liver, lung, adrenal and adrenocortical adenomas.

Background

Receptor for angiotensin II. Mediates its action by association with G proteins that activate a

phosphatidylinositol- calcium second messenger system.

Images



Western blot analysis of various lysate, antibody was diluted at 1000. Secondary antibody was diluted at 1:20000

Please note: All products are 'FOR RESEARCH USE ONLY. NOT FOR USE IN DIAGNOSTIC OR THERAPEUTIC PROCEDURES'.