

CDH17 Polyclonal Antibody

Catalog # AP74325

Product Information

Application	WB, E
Primary Accession	Q12864
Reactivity	Human, Mouse, Rat
Host	Rabbit
Clonality	Polyclonal
Calculated MW	92219

Additional Information

Gene ID	1015
Other Names	Cadherin-17 (Intestinal peptide-associated transporter HPT-1) (Liver-intestine cadherin) (LI-cadherin)
Dilution	WB~~WB 1:500-2000, ELISA 1:10000-20000 E~~N/A
Format	Liquid in PBS containing 50% glycerol, 0.5% BSA and 0.09% (W/V) sodium azide.
Storage Conditions	-20°C

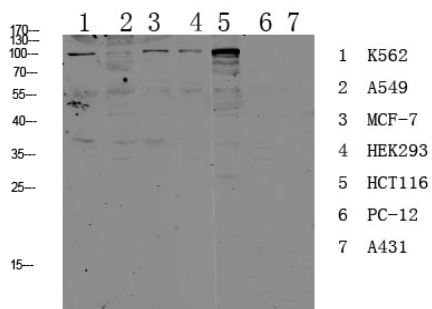
Protein Information

Name	CDH17
Function	Cadherins are calcium-dependent cell adhesion proteins. They preferentially interact with themselves in a homophilic manner in connecting cells; cadherins may thus contribute to the sorting of heterogeneous cell types. LI-cadherin may have a role in the morphological organization of liver and intestine. Involved in intestinal peptide transport.
Cellular Location	Cell membrane; Single-pass type I membrane protein
Tissue Location	Expressed in the gastrointestinal tract and pancreatic duct. Not detected in kidney, lung, liver, brain, adrenal gland and skin.

Background

Cadherins are calcium-dependent cell adhesion proteins. They preferentially interact with themselves in a homophilic manner in connecting cells; cadherins may thus contribute to the sorting of heterogeneous cell types. LI-cadherin may have a role in the morphological organization of liver and intestine. Involved in intestinal peptide transport.

Images



Western blot analysis of various lysate, antibody was diluted at 1000. Secondary antibody was diluted at 1:20000

Please note: All products are 'FOR RESEARCH USE ONLY. NOT FOR USE IN DIAGNOSTIC OR THERAPEUTIC PROCEDURES'.