

# MAP4 Polyclonal Antibody

Catalog # AP74299

## Product Information

---

<b>Application</b>	WB
<b>Primary Accession</b>	<a href="#">P27816</a>
<b>Reactivity</b>	Human, Mouse, Rat
<b>Host</b>	Rabbit
<b>Clonality</b>	Polyclonal
<b>Calculated MW</b>	121005

## Additional Information

---

<b>Gene ID</b>	4134
<b>Other Names</b>	Microtubule-associated protein 4 (MAP-4)
<b>Dilution</b>	WB~~WB 1:500-2000, ELISA 1:10000-20000
<b>Format</b>	Liquid in PBS containing 50% glycerol, 0.5% BSA and 0.09% (W/V) sodium azide.
<b>Storage Conditions</b>	-20°C

## Protein Information

---

<b>Name</b>	MAP4
<b>Function</b>	Non-neuronal microtubule-associated protein. Promotes microtubule assembly.
<b>Cellular Location</b>	Cytoplasm, cytoskeleton. Cytoplasm, cytoskeleton, microtubule organizing center. Note=Recruitment to microtubule is inhibited by microtubules polyglutamylation

## Background

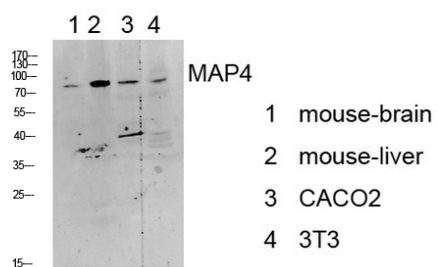
---

Non-neuronal microtubule-associated protein. Promotes microtubule assembly.

## Images

---

Western blot analysis of various lysate, antibody was diluted at 1000. Secondary antibody was diluted at 1:20000



Please note: All products are 'FOR RESEARCH USE ONLY. NOT FOR USE IN DIAGNOSTIC OR THERAPEUTIC PROCEDURES'.