

# Keratin 8 Polyclonal Antibody

Catalog # AP74296

## Product Information

---

<b>Application</b>	WB, E, IHC-P
<b>Primary Accession</b>	<a href="#">P05787</a>
<b>Reactivity</b>	Human, Mouse, Rat
<b>Host</b>	Rabbit
<b>Clonality</b>	Polyclonal
<b>Calculated MW</b>	53704

## Additional Information

---

<b>Gene ID</b>	3856
<b>Other Names</b>	Keratin, type II cytoskeletal 8 (Cytokeratin-8) (CK-8) (Keratin-8) (K8) (Type-II keratin Kb8)
<b>Dilution</b>	WB~~WB 1:500-2000, ELISA 1:10000-20000 E~~N/A IHC-P~~N/A
<b>Format</b>	Liquid in PBS containing 50% glycerol, 0.5% BSA and 0.09% (W/V) sodium azide.
<b>Storage Conditions</b>	-20°C

## Protein Information

---

<b>Name</b>	KRT8
<b>Synonyms</b>	CYK8
<b>Function</b>	Required for the formation of KRT8/KRT18 filaments that are involved in ARHGEF40-mediated actin stress fiber formation and tensional force-induced stress fiber formation and reinforcement (PubMed: <a href="#">26823019</a> ). Together with KRT19, helps to link the contractile apparatus to dystrophin at the costameres of striated muscle.
<b>Cellular Location</b>	Cytoplasm. Nucleus, nucleoplasm {ECO:0000250 UniProtKB:Q10758}. Nucleus matrix {ECO:0000250 UniProtKB:Q10758}. Cytoplasm, cytoskeleton
<b>Tissue Location</b>	Observed in muscle fibers accumulating in the costameres of myoplasm at the sarcolemma membrane in structures that contain dystrophin and spectrin. Expressed in gingival mucosa and hard palate of the oral cavity.

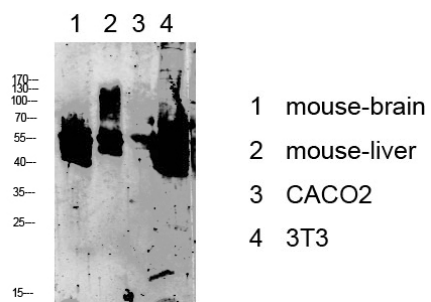
## Background

---

Together with KRT19, helps to link the contractile apparatus to dystrophin at the costameres of striated muscle.

## Images

---



Western blot analysis of various lysate, antibody was diluted at 1000. Secondary antibody was diluted at 1:20000

Please note: All products are 'FOR RESEARCH USE ONLY. NOT FOR USE IN DIAGNOSTIC OR THERAPEUTIC PROCEDURES'.