

BACE Polyclonal Antibody

Catalog # AP74289

Product Information

Application	WB, E
Primary Accession	P56817
Reactivity	Human, Mouse, Rat
Host	Rabbit
Clonality	Polyclonal
Calculated MW	55764

Additional Information

Gene ID	23621
Other Names	Beta-secretase 1 (EC 3.4.23.46) (Aspartyl protease 2) (ASP2) (Asp 2) (Beta-site amyloid precursor protein cleaving enzyme 1) (Beta-site APP cleaving enzyme 1) (Memapsin-2) (Membrane-associated aspartic protease 2)
Dilution	WB~~WB 1:500-2000, ELISA 1:10000-20000 E~~N/A
Format	Liquid in PBS containing 50% glycerol, 0.5% BSA and 0.09% (W/V) sodium azide.
Storage Conditions	-20°C

Protein Information

Name	BACE1 (HGNC:933)
Synonyms	BACE, KIAA1149
Function	Responsible for the proteolytic processing of the amyloid precursor protein (APP). Cleaves at the N-terminus of the A-beta peptide sequence, between residues 671 and 672 of APP, leads to the generation and extracellular release of beta-cleaved soluble APP, and a corresponding cell-associated C-terminal fragment which is later released by gamma-secretase (PubMed: 10656250 , PubMed: 10677483 , PubMed: 20354142). Cleaves CHL1 (By similarity).
Cellular Location	Cell membrane; Single-pass type I membrane protein Golgi apparatus, trans-Golgi network. Endoplasmic reticulum. Endosome. Cell surface. Cytoplasmic vesicle membrane; Single-pass type I membrane protein. Membrane raft {ECO:0000250 UniProtKB:P56818}. Lysosome. Late endosome. Early endosome. Recycling endosome. Cell projection, axon {ECO:0000250 UniProtKB:P56818}. Cell projection, dendrite {ECO:0000250 UniProtKB:P56818}. Note=Predominantly localized to the later Golgi/trans-Golgi network (TGN) and minimally detectable in the early Golgi

compartments. A small portion is also found in the endoplasmic reticulum, endosomes and on the cell surface (PubMed:11466313, PubMed:17425515). Colocalization with APP in early endosomes is due to addition of bisecting N-acetylglucosamine which blocks targeting to late endosomes and lysosomes (By similarity) Retrogradly transported from endosomal compartments to the trans-Golgi network in a phosphorylation- and GGA1- dependent manner (PubMed:15886016). {ECO:0000250|UniProtKB:P56818, ECO:0000269|PubMed:11466313, ECO:0000269|PubMed:15886016, ECO:0000269|PubMed:17425515}

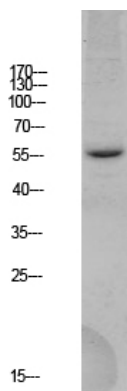
Tissue Location

Expressed at high levels in the brain and pancreas. In the brain, expression is highest in the substantia nigra, locus coruleus and medulla oblongata.

Background

Responsible for the proteolytic processing of the amyloid precursor protein (APP). Cleaves at the N-terminus of the A-beta peptide sequence, between residues 671 and 672 of APP, leads to the generation and extracellular release of beta-cleaved soluble APP, and a corresponding cell-associated C-terminal fragment which is later released by gamma-secretase. Cleaves APP with much more catalytic efficiency than for the wild-type.

Images



Western blot analysis of HEK293 lysate, antibody was diluted at 1000. Secondary antibody was diluted at 1:20000

Please note: All products are 'FOR RESEARCH USE ONLY. NOT FOR USE IN DIAGNOSTIC OR THERAPEUTIC PROCEDURES'.