

# AVPR1A Polyclonal Antibody

Catalog # AP74279

## Product Information

---

<b>Application</b>	WB, E
<b>Primary Accession</b>	<a href="#">P37288</a>
<b>Reactivity</b>	Human, Mouse
<b>Host</b>	Rabbit
<b>Clonality</b>	Polyclonal
<b>Calculated MW</b>	46800

## Additional Information

---

<b>Gene ID</b>	552
<b>Other Names</b>	Vasopressin V1a receptor (V1aR) (AVPR V1a) (Antidiuretic hormone receptor 1a) (Vascular/hepatic-type arginine vasopressin receptor)
<b>Dilution</b>	WB~~WB 1:500-2000, ELISA 1:10000-20000 E~~N/A
<b>Format</b>	Liquid in PBS containing 50% glycerol, 0.5% BSA and 0.09% (W/V) sodium azide.
<b>Storage Conditions</b>	-20°C

## Protein Information

---

<b>Name</b>	AVPR1A
<b>Synonyms</b>	AVPR1
<b>Function</b>	Receptor for arginine vasopressin. The activity of this receptor is mediated by G proteins which activate a phosphatidyl- inositol-calcium second messenger system. Has been involved in social behaviors, including affiliation and attachment.
<b>Cellular Location</b>	Cell membrane; Multi-pass membrane protein.

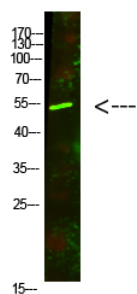
## Background

---

Receptor for arginine vasopressin. The activity of this receptor is mediated by G proteins which activate a phosphatidyl- inositol-calcium second messenger system. Has been involved in social behaviors, including affiliation and attachment.

## Images

---



Western Blot analysis of mouse-lung cells using primary antibody diluted at 1:500(4°C overnight). Secondary antibody : Goat Anti-rabbit IgG IRDye 800( diluted at 1:5000, 25°C, 1 hour)

Please note: All products are 'FOR RESEARCH USE ONLY. NOT FOR USE IN DIAGNOSTIC OR THERAPEUTIC PROCEDURES'.