

# NUT Polyclonal Antibody

Catalog # AP74247

## Product Information

---

<b>Application</b>	WB, E
<b>Primary Accession</b>	<a href="#">Q86Y26</a>
<b>Reactivity</b>	Human, Rat, Mouse
<b>Host</b>	Rabbit
<b>Clonality</b>	Polyclonal
<b>Calculated MW</b>	120314

## Additional Information

---

<b>Gene ID</b>	256646
<b>Other Names</b>	Protein NUT (Nuclear protein in testis)
<b>Dilution</b>	WB~~WB 1:500-2000, ELISA 1:10000-20000 E~~N/A
<b>Format</b>	Liquid in PBS containing 50% glycerol, 0.5% BSA and 0.09% (W/V) sodium azide.
<b>Storage Conditions</b>	-20°C

## Protein Information

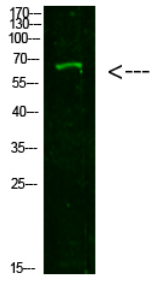
---

<b>Name</b>	NUTM1 ( <a href="#">HGNC:29919</a> )
<b>Synonyms</b>	C15orf55, NUT
<b>Function</b>	Plays a role in the regulation of proliferation. Regulates TERT expression by modulating SP1 binding to TERT promoter binding sites.
<b>Cellular Location</b>	Cytoplasm. Nucleus. Note=Shuttles between nucleus and cytoplasm.
<b>Tissue Location</b>	Specifically expressed in testis.

## Images

---

Western Blot analysis of 293T cells using primary antibody diluted at 1:1000(4°C overnight). Secondary antibody : Goat Anti-rabbit IgG IRDye 800( diluted at 1:5000, 25°C, 1 hour)



Please note: All products are 'FOR RESEARCH USE ONLY. NOT FOR USE IN DIAGNOSTIC OR THERAPEUTIC PROCEDURES'.