

Granzyme M Polyclonal Antibody

Catalog # AP74232

Product Information

Application	IHC-P
Primary Accession	P51124
Reactivity	Human
Host	Rabbit
Clonality	Polyclonal
Calculated MW	27545

Additional Information

Gene ID	3004
Other Names	Granzyme M (EC 3.4.21.-) (Met-1 serine protease) (Hu-Met-1) (Met-ase) (Natural killer cell granular protease)
Dilution	IHC-P~~IHC-p 1:50-200, ELISA 1:10000-20000
Format	Liquid in PBS containing 50% glycerol, 0.5% BSA and 0.09% (W/V) sodium azide.
Storage Conditions	-20°C

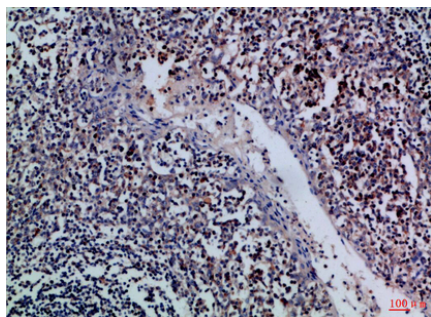
Protein Information

Name	GZMM
Synonyms	MET1
Function	Cleaves peptide substrates after methionine, leucine, and norleucine. Physiological substrates include EZR, alpha-tubulins and the apoptosis inhibitor BIRC5/Survivin. Promotes caspase activation and subsequent apoptosis of target cells.
Cellular Location	Secreted. Cytoplasmic granule. Note=Granules of large granular lymphocytes
Tissue Location	Highly and constitutively expressed in activated natural killer (NK) cells.

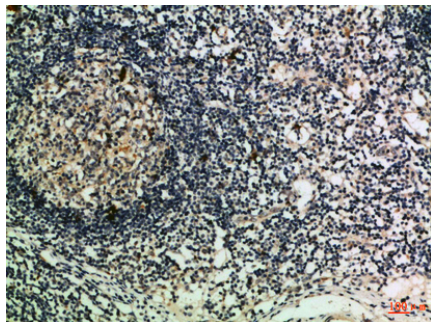
Background

Cleaves peptide substrates after methionine, leucine, and norleucine. Physiological substrates include EZR, alpha- tubulins and the apoptosis inhibitor BIRC5/Survivin. Promotes caspase activation and subsequent apoptosis of target cells.

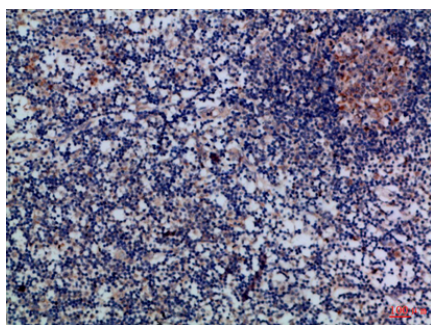
Images



Immunohistochemical analysis of paraffin-embedded Human-tonsil, antibody was diluted at 1:100



Immunohistochemical analysis of paraffin-embedded Human-lymph, antibody was diluted at 1:100



Immunohistochemical analysis of paraffin-embedded Human-lymph, antibody was diluted at 1:100

Please note: All products are 'FOR RESEARCH USE ONLY. NOT FOR USE IN DIAGNOSTIC OR THERAPEUTIC PROCEDURES'.