

# IL-17D Polyclonal Antibody

Catalog # AP74231

## Product Information

---

|                          |                        |
|--------------------------|------------------------|
| <b>Application</b>       | IHC-P                  |
| <b>Primary Accession</b> | <a href="#">Q8TAD2</a> |
| <b>Reactivity</b>        | Human                  |
| <b>Host</b>              | Rabbit                 |
| <b>Clonality</b>         | Polyclonal             |
| <b>Calculated MW</b>     | 21893                  |

## Additional Information

---

|                           |   |
|---------------------------|---|
| <b>Gene ID</b>            | 53342   |
| <b>Other Names</b>        | Interleukin-17D (IL-17D) (Interleukin-27) (IL-27)                             |
| <b>Dilution</b>           | IHC-P~~IHC-p 1:50-200, ELISA 1:10000-20000                                    |
| <b>Format</b>             | Liquid in PBS containing 50% glycerol, 0.5% BSA and 0.09% (W/V) sodium azide. |
| <b>Storage Conditions</b> | -20°C   |

## Protein Information

---

|                          |   |
|--------------------------|---|
| <b>Name</b>              | IL17D   |
| <b>Function</b>          | Induces expression of IL6, CXCL8/IL8, and CSF2/GM-CSF from endothelial cells. |
| <b>Cellular Location</b> | Secreted.   |
| <b>Tissue Location</b>   | Expressed preferentially in adipose, skeletal muscle and CNS.                 |

## Background

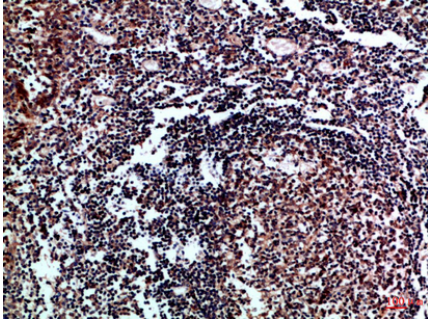
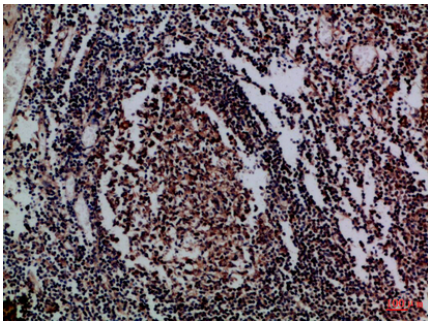
---

Induces expression of IL6, CXCL8/IL8, and CSF2/GM-CSF from endothelial cells.

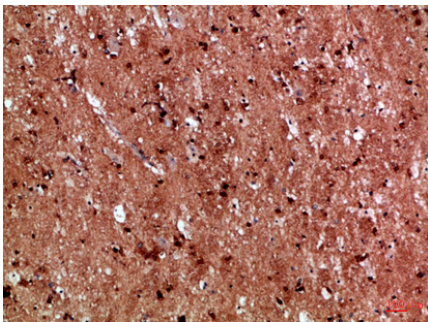
## Images

---

Immunohistochemical analysis of paraffin-embedded  
Human-tonsil, antibody was diluted at 1:100



Immunohistochemical analysis of paraffin-embedded Human-tonsil, antibody was diluted at 1:100



Immunohistochemical analysis of paraffin-embedded Human-brain, antibody was diluted at 1:100

Please note: All products are 'FOR RESEARCH USE ONLY. NOT FOR USE IN DIAGNOSTIC OR THERAPEUTIC PROCEDURES'.