

# CD52 Polyclonal Antibody

Catalog # AP74212

## Product Information

---

<b>Application</b>	IHC-P, IF, ICC, E
<b>Primary Accession</b>	<a href="#">P31358</a>
<b>Reactivity</b>	Human, Rat, Mouse
<b>Host</b>	Rabbit
<b>Clonality</b>	Polyclonal
<b>Calculated MW</b>	6614

## Additional Information

---

<b>Gene ID</b>	1043
<b>Other Names</b>	CAMPATH-1 antigen (CDw52) (Cambridge pathology 1 antigen) (Epididymal secretory protein E5) (Human epididymis-specific protein 5) (He5) (CD antigen CD52)
<b>Dilution</b>	IHC-P~~IHC-p 1:50-200, ELISA 1:10000-20000 IF~~1:50~200 ICC~~N/A E~~N/A
<b>Format</b>	Liquid in PBS containing 50% glycerol, 0.5% BSA and 0.09% (W/V) sodium azide.
<b>Storage Conditions</b>	-20°C

## Protein Information

---

<b>Name</b>	CD52
<b>Synonyms</b>	CDW52, HE5
<b>Function</b>	May play a role in carrying and orienting carbohydrate, as well as having a more specific role.
<b>Cellular Location</b>	Cell membrane; Lipid-anchor, GPI-anchor.

## Background

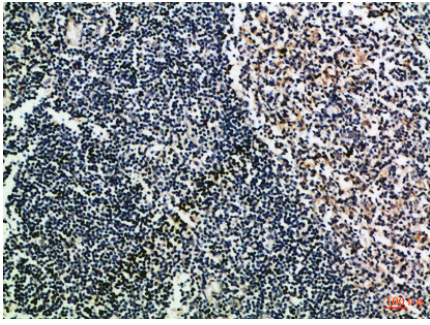
---

May play a role in carrying and orienting carbohydrate, as well as having a more specific role.

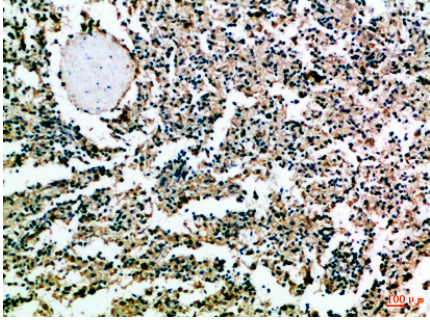
## Images

---

Immunohistochemical analysis of paraffin-embedded



Human-tonsil, antibody was diluted at 1:100



Immunohistochemical analysis of paraffin-embedded Human-spleen, antibody was diluted at 1:100

Please note: All products are 'FOR RESEARCH USE ONLY. NOT FOR USE IN DIAGNOSTIC OR THERAPEUTIC PROCEDURES'.