

Integrin α E Polyclonal Antibody

Catalog # AP74204

Product Information

Application	WB, IHC-P, IF, ICC, E
Primary Accession	P38570
Reactivity	Human, Rat, Mouse
Host	Rabbit
Clonality	Polyclonal
Calculated MW	130159

Additional Information

Gene ID	3682
Other Names	Integrin alpha-E (HML-1 antigen) (Integrin alpha-IEL) (Mucosal lymphocyte 1 antigen) (CD antigen CD103) [Cleaved into: Integrin alpha-E light chain; Integrin alpha-E heavy chain]
Dilution	WB~~1:1000 IHC-P~~IHC-p 1:50-200, ELISA 1:10000-20000 IF~~1:50~200 ICC~~N/A E~~N/A
Format	Liquid in PBS containing 50% glycerol, 0.5% BSA and 0.09% (W/V) sodium azide.
Storage Conditions	-20°C

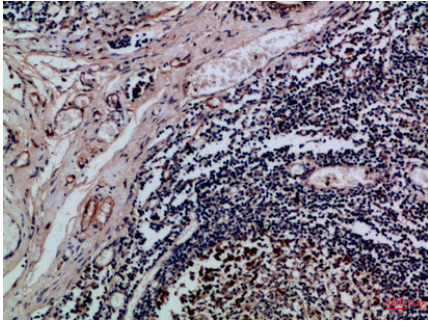
Protein Information

Name	ITGAE
Function	Integrin alpha-E/beta-7 is a receptor for E-cadherin. It mediates adhesion of intra-epithelial T-lymphocytes to epithelial cell monolayers.
Cellular Location	Membrane; Single-pass type I membrane protein.
Tissue Location	Expressed on a subclass of T-lymphocytes known as intra-epithelial lymphocytes which are located between mucosal epithelial cells

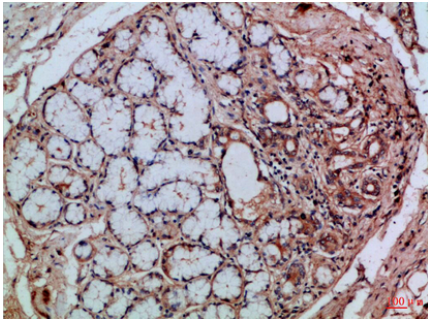
Background

Integrin alpha-E/beta-7 is a receptor for E-cadherin. It mediates adhesion of intra-epithelial T-lymphocytes to epithelial cell monolayers.

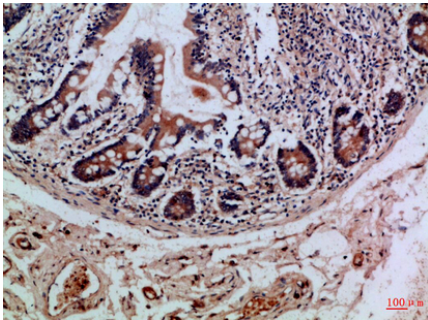
Images



Immunohistochemical analysis of paraffin-embedded Human-tonsil, antibody was diluted at 1:100



Immunohistochemical analysis of paraffin-embedded Human-tonsil, antibody was diluted at 1:100



Immunohistochemical analysis of paraffin-embedded Human-colon, antibody was diluted at 1:100

Please note: All products are 'FOR RESEARCH USE ONLY. NOT FOR USE IN DIAGNOSTIC OR THERAPEUTIC PROCEDURES'.