

Cystatin B Polyclonal Antibody

Catalog # AP74192

Product Information

Application	IHC-P, IF, ICC, E
Primary Accession	P04080
Reactivity	Human, Rat, Mouse
Host	Rabbit
Clonality	Polyclonal
Calculated MW	11140

Additional Information

Gene ID	1476
Other Names	Cystatin-B (CPI-B) (Liver thiol proteinase inhibitor) (Stefin-B)
Dilution	IHC-P~~IHC-p 1:50-200, ELISA 1:10000-20000 IF~~1:50~200 ICC~~N/A E~~N/A
Format	Liquid in PBS containing 50% glycerol, 0.5% BSA and 0.09% (W/V) sodium azide.
Storage Conditions	-20°C

Protein Information

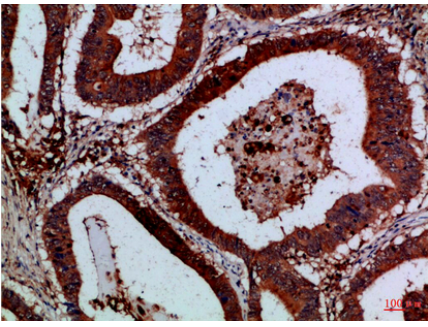
Name	CSTB
Synonyms	CST6, STFB
Function	This is an intracellular thiol proteinase inhibitor. Tightly binding reversible inhibitor of cathepsins L, H and B.
Cellular Location	Cytoplasm. Nucleus

Background

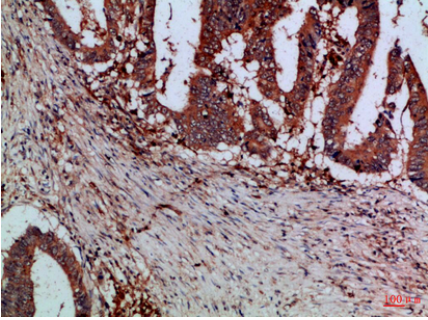
This is an intracellular thiol proteinase inhibitor. Tightly binding reversible inhibitor of cathepsins L, H and B.

Images

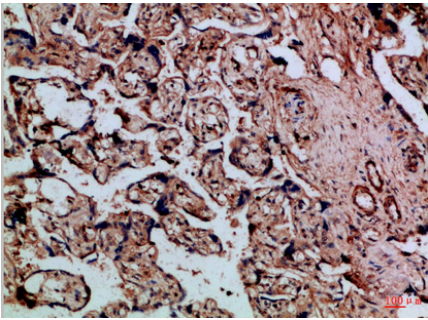
Immunohistochemical analysis of paraffin-embedded Human-colon-cancer, antibody was diluted at 1:100



Immunohistochemical analysis of paraffin-embedded Human-colon-cancer, antibody was diluted at 1:100



Immunohistochemical analysis of paraffin-embedded Human-placenta, antibody was diluted at 1:100



Please note: All products are 'FOR RESEARCH USE ONLY. NOT FOR USE IN DIAGNOSTIC OR THERAPEUTIC PROCEDURES'.