

BMP-1 Polyclonal Antibody

Catalog # AP74160

Product Information

Application	IHC-P, IF, ICC, E
Primary Accession	P13497
Reactivity	Human, Mouse, Rat
Host	Rabbit
Clonality	Polyclonal
Calculated MW	111249

Additional Information

Gene ID	649
Other Names	Bone morphogenetic protein 1 (BMP-1) (EC 3.4.24.19) (Mammalian tolloid protein) (mTld) (Procollagen C-proteinase) (PCP)
Dilution	IHC-P~~IHC-p 1:50-200, ELISA 1:10000-20000 IF~~1:50~200 ICC~~N/A E~~N/A
Format	Liquid in PBS containing 50% glycerol, 0.5% BSA and 0.09% (W/V) sodium azide.
Storage Conditions	-20°C

Protein Information

Name	BMP1
Synonyms	PCOLC
Function	<p>Metalloprotease that plays key roles in regulating the formation of the extracellular matrix (ECM) via processing of various precursor proteins into mature functional enzymes or structural proteins (PubMed:33206546). Thereby participates in several developmental and physiological processes such as cartilage and bone formation, muscle growth and homeostasis, wound healing and tissue repair (PubMed:32636307, PubMed:33169406). Roles in ECM formation include cleavage of the C-terminal propeptides from procollagens such as procollagen I, II and III or the proteolytic activation of the enzyme lysyl oxidase LOX, necessary to formation of covalent cross- links in collagen and elastic fibers (PubMed:31152061, PubMed:33206546). Additional substrates include matricellular thrombospondin-1/THBS1 whose cleavage leads to cell adhesion disruption and TGF-beta activation (PubMed:32636307).</p>
Cellular Location	Golgi apparatus, trans-Golgi network. Secreted, extracellular space, extracellular matrix. Secreted. Note=Co-localizes with POSTN in the Golgi.

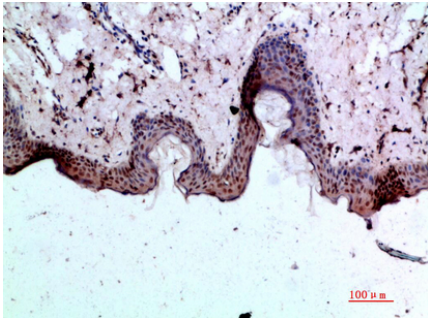
Tissue Location

Ubiquitous.

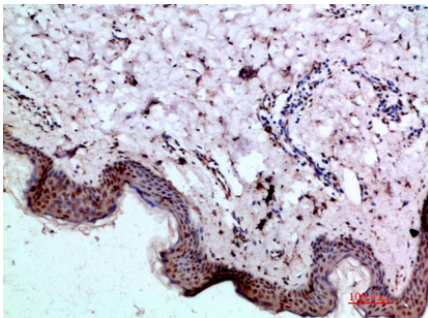
Background

Cleaves the C-terminal propeptides of procollagen I, II and III. Induces cartilage and bone formation. May participate in dorsoventral patterning during early development by cleaving chordin (CHRD). Responsible for the proteolytic activation of lysyl oxidase LOX.

Images



Immunohistochemical analysis of paraffin-embedded human-skin, antibody was diluted at 1:200



Immunohistochemical analysis of paraffin-embedded human-skin, antibody was diluted at 1:200

Please note: All products are 'FOR RESEARCH USE ONLY. NOT FOR USE IN DIAGNOSTIC OR THERAPEUTIC PROCEDURES'.