

CCL14 Polyclonal Antibody

Catalog # AP74134

Product Information

Application	IHC-P, IF, ICC, E
Primary Accession	Q16627
Reactivity	Human, Rat, Mouse
Host	Rabbit
Clonality	Polyclonal
Calculated MW	10678

Additional Information

Gene ID	6358
Other Names	C-C motif chemokine 14 (Chemokine CC-1/CC-3) (HCC-1/HCC-3) (HCC-1(1-74)) (NCC-2) (Small-inducible cytokine A14) [Cleaved into: HCC-1(3-74); HCC-1(4-74); HCC-1(9-74)]
Dilution	IHC-P~~IHC-p 1:50-200, ELISA 1:10000-20000 IF~~1:50~200 ICC~~N/A E~~N/A
Format	Liquid in PBS containing 50% glycerol, 0.5% BSA and 0.09% (W/V) sodium azide.
Storage Conditions	-20°C

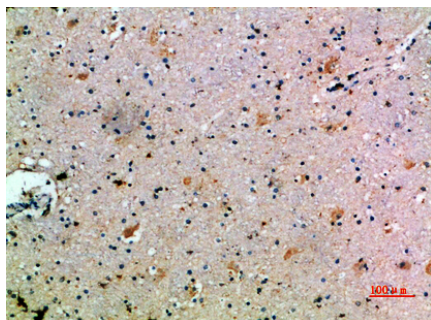
Protein Information

Name	CCL14
Synonyms	NCC2, SCYA14
Function	Has weak activities on human monocytes and acts via receptors that also recognize MIP-1 alpha. It induces intracellular Ca(2+) changes and enzyme release, but no chemotaxis, at concentrations of 100-1,000 nM, and is inactive on T-lymphocytes, neutrophils, and eosinophil leukocytes. Enhances the proliferation of CD34 myeloid progenitor cells. The processed form HCC-1(9-74) is a chemotactic factor that attracts monocytes, eosinophils, and T-cells and is a ligand for CCR1, CCR3 and CCR5.
Cellular Location	Secreted.
Tissue Location	Expressed constitutively in several normal tissues: spleen, liver, skeletal and heart muscle, gut, and bone marrow, present at high concentrations (1-80 nM) in plasma

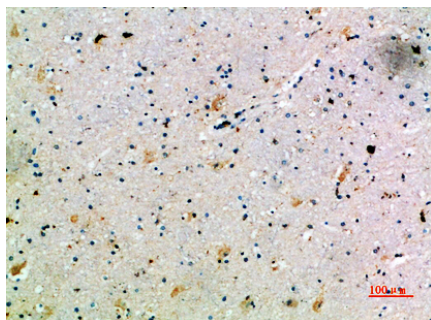
Background

Has weak activities on human monocytes and acts via receptors that also recognize MIP-1 alpha. It induces intracellular Ca^{2+} changes and enzyme release, but no chemotaxis, at concentrations of 100-1,000 nM, and is inactive on T-lymphocytes, neutrophils, and eosinophil leukocytes. Enhances the proliferation of CD34 myeloid progenitor cells. The processed form HCC-1(9-74) is a chemotactic factor that attracts monocytes, eosinophils, and T-cells and is a ligand for CCR1, CCR3 and CCR5.

Images



Immunohistochemical analysis of paraffin-embedded human-brain, antibody was diluted at 1:200



Immunohistochemical analysis of paraffin-embedded human-brain, antibody was diluted at 1:200

Please note: All products are 'FOR RESEARCH USE ONLY. NOT FOR USE IN DIAGNOSTIC OR THERAPEUTIC PROCEDURES'.