

CD303 Polyclonal Antibody

Catalog # AP74113

Product Information

Application	IHC-P, IF, ICC, E
Primary Accession	Q8WTT0
Reactivity	Human, Rat, Mouse
Host	Rabbit
Clonality	Polyclonal
Calculated MW	25038

Additional Information

Gene ID	170482
Other Names	C-type lectin domain family 4 member C (Blood dendritic cell antigen 2) (BDCA-2) (C-type lectin superfamily member 7) (Dendritic lectin) (CD antigen CD303)
Dilution	IHC-P~~IHC-p 1:50-200, ELISA 1:10000-20000 IF~~1:50~200 ICC~~N/A E~~N/A
Format	Liquid in PBS containing 50% glycerol, 0.5% BSA and 0.09% (W/V) sodium azide.
Storage Conditions	-20°C

Protein Information

Name	CLEC4C
Synonyms	BDCA2, CLECSF11, CLECSF7, DLEC, HECL
Function	Lectin-type cell surface receptor which may play a role in antigen capturing by dendritic cells (PubMed: 11748283 , PubMed: 21880719 , PubMed: 25995448). Specifically recognizes non-sialylated galactose- terminated biantennary glycans containing the trisaccharide epitope Gal(beta1-3/4)GlcNAc(beta1-2)Man (PubMed: 21880719 , PubMed: 25995448). Binds to serum IgG (PubMed: 25995448). Efficiently targets ligand into antigen-processing and peptide-loading compartments for presentation to T-cells (PubMed: 11748283). May mediate potent inhibition of induction of IFN-alpha/beta expression in plasmacytoid dendritic cells (PubMed: 11748283 , PubMed: 21880719). May act as a signaling receptor that activates protein-tyrosine kinases and mobilizes intracellular calcium (PubMed: 11748283).
Cellular Location	Cell membrane; Single-pass type II membrane protein

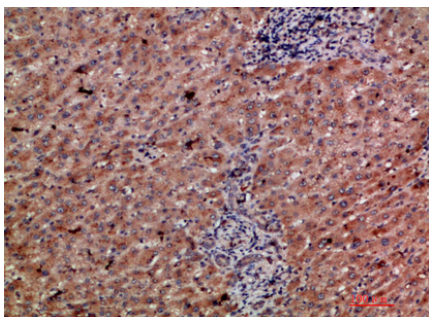
Tissue Location

Expressed in plasmacytoid dendritic cells (PDCs). Constitutively expressed in immature monocyte-derived dendritic cells (iMDDC) and is significantly down-regulated upon maturation with LPS but not with TNF.

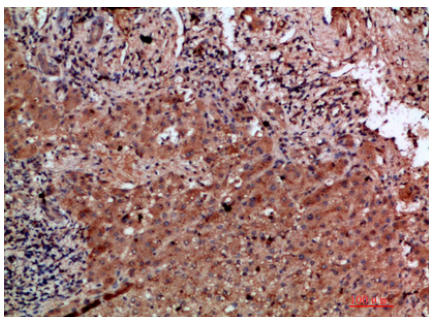
Background

Lectin-type cell surface receptor which may play a role in antigen capturing by dendritic cells (PubMed:[11748283](#), PubMed:[21880719](#), PubMed:[25995448](#)). Specifically recognizes non- sialylated galactose-terminated biantennary glycans containing the trisaccharide epitope Gal(beta1-3/4)GlcNAc(beta1-2)Man (PubMed:[21880719](#), PubMed:[25995448](#)). Binds to serum IgG (PubMed:[25995448](#)). Efficiently targets ligand into antigen- processing and peptide-loading compartments for presentation to T- cells (PubMed:[11748283](#)). May mediate potent inhibition of induction of IFN-alpha/beta expression in plasmacytoid dendritic cells (PubMed:[11748283](#), PubMed:[21880719](#)). May act as a signaling receptor that activates protein-tyrosine kinases and mobilizes intracellular calcium (PubMed:[11748283](#)).

Images



Immunohistochemical analysis of paraffin-embedded human-liver-cancer, antibody was diluted at 1:200



Immunohistochemical analysis of paraffin-embedded human-liver-cancer, antibody was diluted at 1:200

Please note: All products are 'FOR RESEARCH USE ONLY. NOT FOR USE IN DIAGNOSTIC OR THERAPEUTIC PROCEDURES'.