

# DAAM1 Polyclonal Antibody

Catalog # AP74085

## Product Information

---

Application	WB, E
Primary Accession	<a href="#">Q9Y4D1</a>
Reactivity	Human, Mouse
Host	Rabbit
Clonality	Polyclonal
Calculated MW	123473

## Additional Information

---

Gene ID	23002
Other Names	Disheveled-associated activator of morphogenesis 1
Dilution	WB~~WB 1:500-2000, ELISA 1:10000-20000 E~~N/A
Format	Liquid in PBS containing 50% glycerol, 0.5% BSA and 0.09% (W/V) sodium azide.
Storage Conditions	-20°C

## Protein Information

---

Name	DAAM1
Synonyms	KIAA0666
Function	Binds to disheveled (Dvl) and Rho, and mediates Wnt-induced Dvl-Rho complex formation. May play a role as a scaffolding protein to recruit Rho-GDP and Rho-GEF, thereby enhancing Rho-GTP formation. Can direct nucleation and elongation of new actin filaments. Involved in building functional cilia (PubMed: <a href="#">16630611</a> , PubMed: <a href="#">17482208</a> ). Involved in the organization of the subapical actin network in multiciliated epithelial cells (By similarity). Together with DAAM2, required for myocardial maturation and sarcomere assembly (By similarity). During cell division, may regulate RHOA activation that signals spindle orientation and chromosomal segregation.
Cellular Location	Cytoplasm. Cytoplasm, cytoskeleton, cilium basal body. Note=Perinuclear. Colocalizes with RHOA and KANK1 around centrosomes. {ECO:0000250 UniProtKB:Q8BPM0}
Tissue Location	Expressed in all tissues examined.

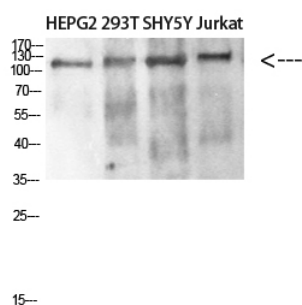
## Background

---

Binds to disheveled (Dvl) and Rho, and mediates Wnt- induced Dvl-Rho complex formation. May play a role as a scaffolding protein to recruit Rho-GDP and Rho-GEF, thereby enhancing Rho-GTP formation. Can direct nucleation and elongation of new actin filaments. Involved in building functional cilia (PubMed:[16630611](#), PubMed:[17482208](#)). Involved in the organization of the subapical actin network in multiciliated epithelial cells (By similarity). Together with DAAM2, required for myocardial maturation and sarcomere assembly (By similarity).

## Images

---



Western blot analysis of SW480 MCF7 lysate, antibody was diluted at 500. Secondary antibody was diluted at 1:20000

Please note: All products are 'FOR RESEARCH USE ONLY. NOT FOR USE IN DIAGNOSTIC OR THERAPEUTIC PROCEDURES'.