

# MBL-C Polyclonal Antibody

Catalog # AP74003

## Product Information

---

Application	WB
Primary Accession	<a href="#">P11226</a>
Reactivity	Human, Mouse
Host	Rabbit
Clonality	Polyclonal
Calculated MW	26144

## Additional Information

---

Gene ID	4153
Other Names	MBL2 COLEC1 MBL
Dilution	WB~~WB 1:500-2000, ELISA 1:10000-20000
Format	Liquid in PBS containing 50% glycerol, 0.5% BSA and 0.09% (W/V) sodium azide.
Storage Conditions	-20°C

## Protein Information

---

Name	MBL2 ( <a href="#">HGNC:6922</a> )
Synonyms	COLEC1, MBL
Function	Calcium-dependent lectin involved in innate immune defense (PubMed: <a href="#">35102342</a> ). Binds mannose, fucose and N-acetylglucosamine on different microorganisms and activates the lectin complement pathway. Binds to late apoptotic cells, as well as to apoptotic blebs and to necrotic cells, but not to early apoptotic cells, facilitating their uptake by macrophages. May bind DNA. Upon SARS coronavirus-2/SARS-CoV-2 infection, activates the complement lectin pathway which leads to the inhibition SARS-CoV-2 infection and a reduction of the induced inflammatory response (PubMed: <a href="#">35102342</a> ).
Cellular Location	Secreted.
Tissue Location	Plasma protein produced mainly in the liver.

## Background

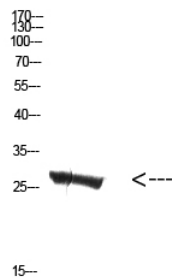
---

Calcium-dependent lectin involved in innate immune defense. Binds mannose, fucose and

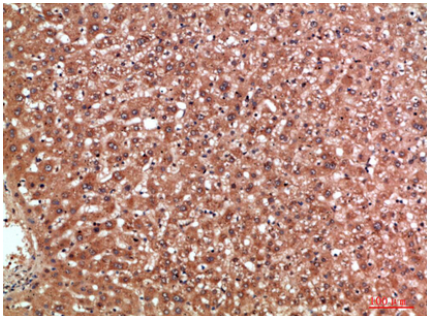
N-acetylglucosamine on different microorganisms and activates the lectin complement pathway. Binds to late apoptotic cells, as well as to apoptotic blebs and to necrotic cells, but not to early apoptotic cells, facilitating their uptake by macrophages. May bind DNA.

## Images

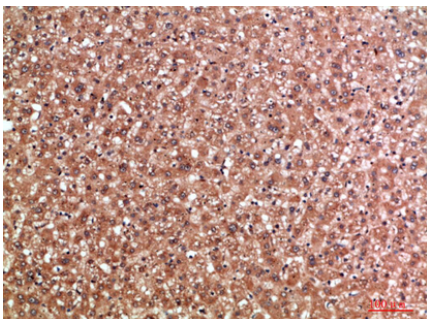
---



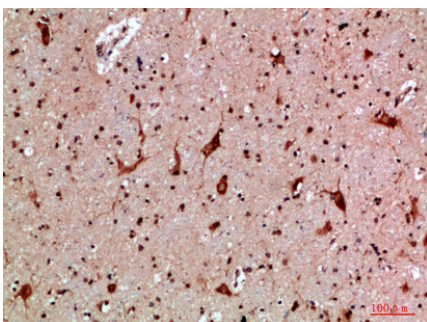
Western Blot analysis of mouse-kidney cells using Antibody diluted at 500. Secondary antibody was diluted at 1:20000



Immunohistochemical analysis of paraffin-embedded human-liver, antibody was diluted at 1:200

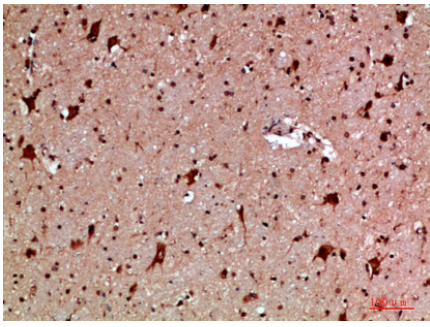


Immunohistochemical analysis of paraffin-embedded human-liver, antibody was diluted at 1:200



Immunohistochemical analysis of paraffin-embedded human-brain, antibody was diluted at 1:200

Immunohistochemical analysis of paraffin-embedded human-brain, antibody was diluted at 1:200



Please note: All products are 'FOR RESEARCH USE ONLY. NOT FOR USE IN DIAGNOSTIC OR THERAPEUTIC PROCEDURES'.