

# TGFβ RIII Polyclonal Antibody

Catalog # AP73938

## Product Information

---

Application	WB
Primary Accession	<a href="#">Q03167</a>
Reactivity	Human
Host	Rabbit
Clonality	Polyclonal
Calculated MW	93499

## Additional Information

---

Gene ID	7049
Other Names	transforming growth factor, beta receptor III
Dilution	WB~~WB 1:500-2000, ELISA 1:10000-20000
Format	Liquid in PBS containing 50% glycerol, 0.5% BSA and 0.09% (W/V) sodium azide.
Storage Conditions	-20°C

## Protein Information

---

Name	TGFB3 ( <a href="#">HGNC:11774</a> )
Function	<p>Cell surface receptor that regulates diverse cellular processes including cell proliferation, differentiation, migration, and apoptosis (PubMed:<a href="#">12958365</a>, PubMed:<a href="#">19416857</a>). Initiates BMP, inhibin, and TGF-beta signaling pathways by interacting with different ligands including TGFB1, BMP2, BMP5, BMP7 or GDF5 (PubMed:<a href="#">18184661</a>). Alternatively, acts as a cell surface coreceptor for BMP ligands, serving to enhance ligand binding by differentially regulating BMPRI1A/ALK3 and BMPRI1B/ALK6 receptor trafficking (PubMed:<a href="#">19726563</a>). Promotes epithelial cell adhesion, focal adhesion formation and integrin signaling during epithelial cell spreading on fibronectin (PubMed:<a href="#">22562249</a>). By interacting with the scaffolding protein beta- arrestin2/ARRB2, regulates migration or actin cytoskeleton and promotes the activation of CDC42 as well as the inhibition of NF-kappa-B (PubMed:<a href="#">19416857</a>, PubMed:<a href="#">19325136</a>). In gonadotrope cells, acts as an inhibin A coreceptor and regulates follicle-stimulating hormone (FSH) levels and female fertility (By similarity). Plays a role in the inhibition of directed and random cell migration in epithelial cells by altering the actin cytoskeletal organization (PubMed:<a href="#">19416857</a>). Participates in epithelial-mesenchymal transformation (EMT) upon binding to BMP2 or TGFB2, by activating the PAR6/SMURF1/RHOA pathway (By similarity).</p>

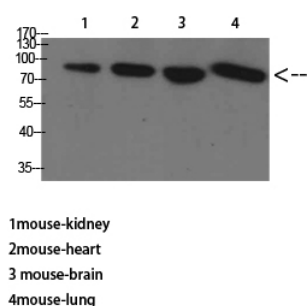
## Cellular Location

Cell membrane; Single-pass type I membrane protein. Secreted {ECO:0000250|UniProtKB:P26342}. Secreted, extracellular space, extracellular matrix {ECO:0000250|UniProtKB:P26342}. Note=Exists both as a membrane-bound form and as soluble form in serum and in the extracellular matrix. {ECO:0000250|UniProtKB:P26342}

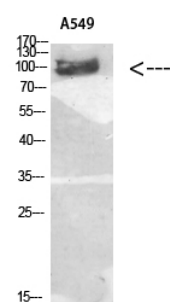
## Background

Binds to TGF-beta. Could be involved in capturing and retaining TGF-beta for presentation to the signaling receptors.

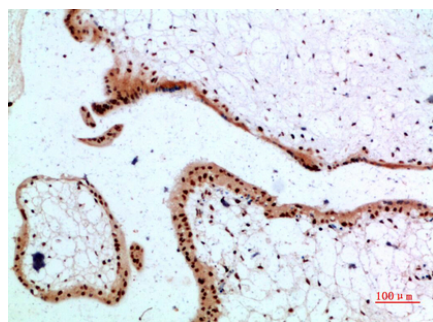
## Images



Western Blot analysis of mouse-kidney mouse-heart mouse-brain mouse-lung cells using TGFβ RIII Polyclonal Antibody diluted at 1:1000. Secondary antibody was diluted at 1:20000



Western Blot analysis of A549 cells using Antibody diluted at 1:1000. Secondary antibody was diluted at 1:20000



Immunohistochemical analysis of paraffin-embedded human-placenta, antibody was diluted at 1:200

Please note: All products are 'FOR RESEARCH USE ONLY. NOT FOR USE IN DIAGNOSTIC OR THERAPEUTIC PROCEDURES'.