

# MUM1 Polyclonal Antibody

Catalog # AP73936

## Product Information

---

Application	WB
Primary Accession	<a href="#">Q2TAK8</a>
Reactivity	Human, Mouse, Rat
Host	Rabbit
Clonality	Polyclonal
Calculated MW	78636

## Additional Information

---

Gene ID	84939
Other Names	melanoma associated antigen (mutated) 1
Dilution	WB~~WB 1:500-2000, ELISA 1:10000-20000
Format	Liquid in PBS containing 50% glycerol, 0.5% BSA and 0.09% (W/V) sodium azide.
Storage Conditions	-20°C

## Protein Information

---

Name	PWWP3A ( <a href="#">HGNC:29641</a> )
Function	Involved in the DNA damage response pathway by contributing to the maintenance of chromatin architecture. Recruited to the vicinity of DNA breaks by TP53BP1 and plays an accessory role to facilitate damage-induced chromatin changes and promoting chromatin relaxation. Required for efficient DNA repair and cell survival following DNA damage.
Cellular Location	Nucleus. Note=Recruited to DNA damage sites via its interaction with the BRCT domain of TP53BP1

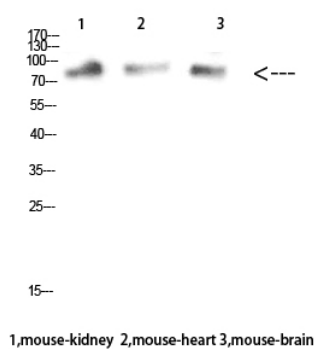
## Background

---

Involved in the DNA damage response pathway by contributing to the maintenance of chromatin architecture. Recruited to the vicinity of DNA breaks by TP53BP1 and plays an accessory role to facilitate damage-induced chromatin changes and promoting chromatin relaxation. Required for efficient DNA repair and cell survival following DNA damage.

## Images

---



Western Blot analysis of mouse-kidney mouse-heart mouse-brain cells using MUM1 Polyclonal Antibody diluted at 1:1000. Secondary antibody was diluted at 1:20000

Please note: All products are 'FOR RESEARCH USE ONLY. NOT FOR USE IN DIAGNOSTIC OR THERAPEUTIC PROCEDURES'.