

Dectin-2 Polyclonal Antibody

Catalog # AP73868

Product Information

Application	WB, IHC-P
Primary Accession	Q6EIG7
Reactivity	Human
Host	Rabbit
Clonality	Polyclonal
Calculated MW	23998

Additional Information

Gene ID	93978
Other Names	CLEC6A; CLECSF10; DECTIN2; C-type lectin domain family 6 member A; C-type lectin superfamily member 10; Dendritic cell-associated C-type lectin 2; DC-associated C-type lectin 2; Dectin-2
Dilution	WB~~Western Blot: 1/500 - 1/2000. IHC-p: 1:100-1:300. ELISA: 1/10000. Not yet tested in other applications. IHC-P~~Western Blot: 1/500 - 1/2000. IHC-p: 1:100-1:300. ELISA: 1/10000. Not yet tested in other applications.
Format	Liquid in PBS containing 50% glycerol, 0.5% BSA and 0.09% (W/V) sodium azide.
Storage Conditions	-20°C

Protein Information

Name	CLEC6A (HGNC:14556)
Function	Calcium-dependent lectin that acts as a pattern recognition receptor (PRR) of the innate immune system: specifically recognizes and binds alpha-mannans on <i>C.albicans</i> hyphae (PubMed: 23911656 , PubMed: 28652405). Binding of <i>C.albicans</i> alpha-mannans to this receptor complex leads to phosphorylation of the immunoreceptor tyrosine-based activation motif (ITAM) of FCER1G, triggering activation of SYK, CARD9 and NF-kappa-B, consequently driving maturation of antigen-presenting cells and shaping antigen-specific priming of T-cells toward effector T-helper 1 and T-helper 17 cell subtypes (By similarity). Recognizes also, in a mannose-dependent manner, allergens from house dust mite and fungi, by promoting cysteinyl leukotriene production (By similarity). Recognizes soluble elements from the eggs of <i>Shistosoma mansoni</i> altering adaptive immune responses (By similarity).
Cellular Location	Cell membrane; Single-pass type II membrane protein

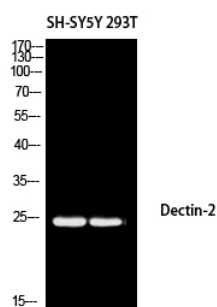
Tissue Location

Expressed in lung, spleen, lymph node, leukocytes, bone marrow, tonsils and dendritic cells. Strongly expressed in purified monocytes and weakly in B-cells. In peripheral blood cells, preferentially expressed in plasmacytoids rather than myeloids

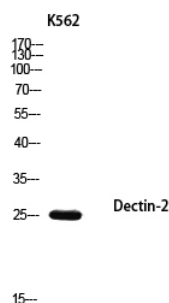
Background

Binds high-mannose carbohydrates in a Ca^{2+} -dependent manner (PubMed: [28652405](#)). Functional receptor for alpha-mannans on *C.albicans* hyphae. Plays an important role in the host defense against *C.albicans* infection by inducing TH17 cell differentiation. Recognizes also, in a mannose-dependent manner, allergens from house dust mite and fungi, by promoting cysteinyl leukotriene production. Recognizes soluble elements from the eggs of *Shistosoma mansoni* altering adaptive immune responses. Transduces signals through an Fc receptor gamma chain /FCER1G and Syk-CARD9-NF-kappa-B-dependent pathway (By similarity).

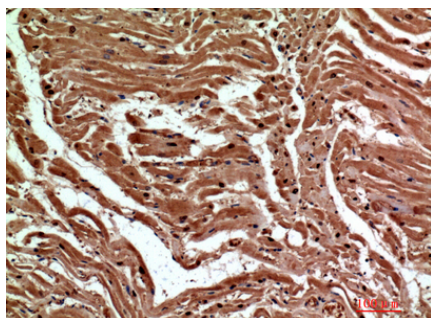
Images



Western blot analysis of SH-SY5Y 293T using Dectin-2 antibody. Antibody was diluted at 1:1000. Secondary antibody was diluted at 1:20000



Western blot analysis of K562 using Dectin-2 antibody. Antibody was diluted at 1:1000. Secondary antibody was diluted at 1:20000



Immunohistochemical analysis of paraffin-embedded human-heart, antibody was diluted at 1:200

Please note: All products are 'FOR RESEARCH USE ONLY. NOT FOR USE IN DIAGNOSTIC OR THERAPEUTIC PROCEDURES'.