

# Probetacellulin Polyclonal Antibody

Catalog # AP73825

## Product Information

---

|                          |                        |
|--------------------------|------------------------|
| <b>Application</b>       | WB, E, IHC-P           |
| <b>Primary Accession</b> | <a href="#">P35070</a> |
| <b>Reactivity</b>        | Human, Rat, Mouse      |
| <b>Host</b>              | Rabbit                 |
| <b>Clonality</b>         | Polyclonal             |
| <b>Calculated MW</b>     | 19746                  |

## Additional Information

---

|                           |   |
|---------------------------|---|
| <b>Gene ID</b>            | 685   |
| <b>Other Names</b>        | BTC; Probetacellulin  |
| <b>Dilution</b>           | WB~~Western Blot: 1/500 - 1/2000. ELISA: 1/10000. Not yet tested in other applications. E~~N/A IHC-P~~N/A |
| <b>Format</b>             | Liquid in PBS containing 50% glycerol, 0.5% BSA and 0.09% (W/V) sodium azide.                             |
| <b>Storage Conditions</b> | -20°C   |

## Protein Information

---

|                          |  |
|--------------------------|--|
| <b>Name</b>              | BTC  |
| <b>Function</b>          | Growth factor that binds to EGFR, ERBB4 and other EGF receptor family members. Potent mitogen for retinal pigment epithelial cells and vascular smooth muscle cells. |
| <b>Cellular Location</b> | [Betacellulin]: Secreted, extracellular space.   |
| <b>Tissue Location</b>   | Synthesized in several tissues and tumor cells. Predominantly expressed in pancreas and small intestine  |

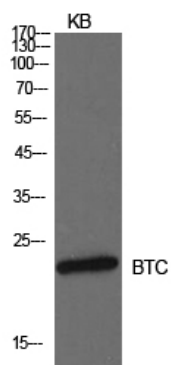
## Background

---

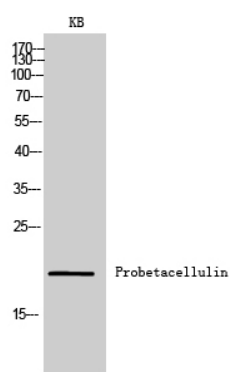
Growth factor that binds to EGFR, ERBB4 and other EGF receptor family members. Potent mitogen for retinal pigment epithelial cells and vascular smooth muscle cells.

## Images

---



Western Blot analysis of KB cells using Probetacellulin Polyclonal Antibody.. Secondary antibody was diluted at 1:20000



Western Blot analysis of KB cells using Probetacellulin Polyclonal Antibody. Secondary antibody was diluted at 1:20000

Please note: All products are 'FOR RESEARCH USE ONLY. NOT FOR USE IN DIAGNOSTIC OR THERAPEUTIC PROCEDURES'.