

# CD206 Polyclonal Antibody

Catalog # AP73823

## Product Information

---

|                          |                        |
|--------------------------|------------------------|
| <b>Application</b>       | WB, IHC-P, IF, ICC, E  |
| <b>Primary Accession</b> | <a href="#">P22897</a> |
| <b>Reactivity</b>        | Human, Mouse, Rat      |
| <b>Host</b>              | Rabbit                 |
| <b>Clonality</b>         | Polyclonal             |

## Additional Information

---

|                           |   |
|---------------------------|---|
| <b>Other Names</b>        | MRC1; CLEC13D; CLEC13DL; MRC1L1; Macrophage mannose receptor 1; MMR; C-type lectin domain family 13 member D; C-type lectin domain family 13 member D-like; Macrophage mannose receptor 1-like protein 1; CD206   |
| <b>Dilution</b>           | WB~~Western Blot: 1/500 - 1/2000. IHC-p: 1:100-1:300. ELISA: 1/10000. Not yet tested in other applications. IHC-P~~Western Blot: 1/500 - 1/2000. IHC-p: 1:100-1:300. ELISA: 1/10000. Not yet tested in other applications. IF~~1:50~200 ICC~~N/A E~~N/A |
| <b>Format</b>             | Liquid in PBS containing 50% glycerol, 0.5% BSA and 0.09% (W/V) sodium azide.   |
| <b>Storage Conditions</b> | -20°C   |

## Protein Information

---

### Background

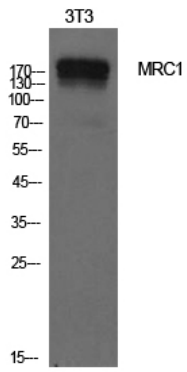
---

Mediates the endocytosis of glycoproteins by macrophages. Binds both sulfated and non-sulfated polysaccharide chains. (Microbial infection) Acts as a receptor for Dengue virus envelope protein E.

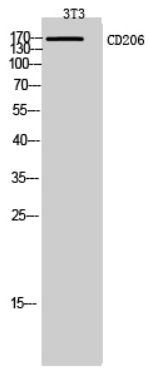
### Images

---

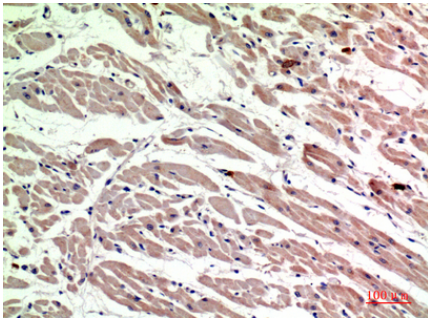
Western Blot analysis of NIH-3T3 cells using CD206 Polyclonal Antibody.. Secondary antibody was diluted at 1:20000



Western Blot analysis of 3T3 cells using CD206 Polyclonal Antibody. Secondary antibody was diluted at 1:20000



Immunohistochemical analysis of paraffin-embedded human-heart, antibody was diluted at 1:200



Please note: All products are 'FOR RESEARCH USE ONLY. NOT FOR USE IN DIAGNOSTIC OR THERAPEUTIC PROCEDURES'.